

Maritime Risk Symposium Public & Private Partnerships

Bethann Rooney
The Port Authority of
NY & NJ
November 7, 2011





**Ninety Years
of Investing
in the Region**

THE PORT AUTHORITY OF NY & NJ



The Port of New York & New Jersey



- First in overall risk
- Top 5 for overall commercial, economic & strategic importance
- 150 assets of national significance
- 185 +/- regulated maritime facilities
 - 13 (7%) on PA property
- 408,000 vessel movements a year – 5,400 deep draft arrivals
- 146 square miles of navigable waterways
- 576 miles of waterfront



Security Partners/Interested Agencies

•Department of Homeland Security

- Coast Guard
- Customs and Border Protection
- Immigration & Customs Enforcement
- Transportation Security Administration
- FEMA
- APHIS

•Department of Defense

- Defense Threat Reduction Agency
- Army Corps of Engineers

•Department of Justice

- FBI
- Office of Intelligence & Security
- Central Intelligence Agency
- National Security Council
- ATF
- Drug Enforcement Admin

Department of Commerce

Central Intelligence Agency

Food & Drug Administration

•Department of Transportation

- Federal Railway Administration
- Federal Highway Administration
- Maritime Administration

•Department of Commerce

- NOAA

•Department of the Interior

- Fish and Wildlife

•Department of Agriculture

•Department of Energy

•Department of Health & Human Services

•Department of State

•27 state and local law enforcement and emergency response agencies



Stakeholder Coordination & Partnerships (Sample)

PANYNJ Initiated

- **Tenant Security Working Group**
- **Law Enforcement Working Group**
- **Annual Port Expo**
- **Community Policing & Crime Watch Program**
- **Port Security Caucus**
- **Port Security Task Force**

PANYNJ Supported

- **Area Maritime Security Committee**
- **DHS Center of Excellence on Maritime Security & Port Resiliency**
- **Federal Task Forces**
 - **Joint Terrorism Task Force (JTTF) – Newark and New York**
 - **Border Enforcement Security Task (BEST) Force**
 - **DEA Task Force on Narcotics**
- **New Jersey Regional Information Operations Center (RIOC)**
- **Harbor Watch Program**



Area Maritime Security Committee

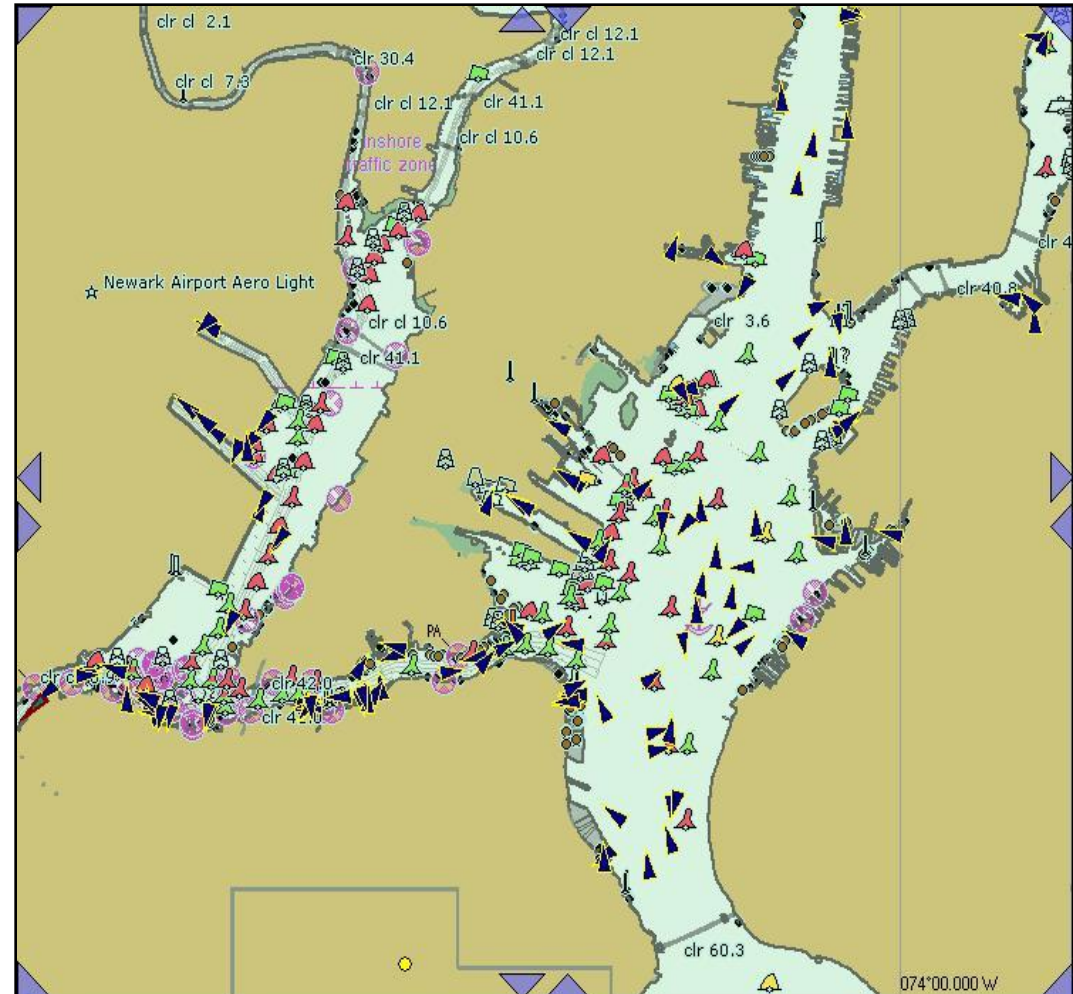
- **Award for Outstanding Regional Partnership (2011 UASI Conf)**
- **Robust management structure & active participation of port partners**
- **Portwide Strategic Risk Management Plan (since 2005)**
 - 173 projects and initiatives (80% +/- complete or underway)
 - Latest revision September 2011 (9 objectives / 30 initiatives)
- **All hazards approach (close coordination with Harbor Ops and Area Committees)**
- **Administers \$282 M of Port Security Grant Program**

We make a
big world
smaller



Blue Force Tracking

- Encrypted AIS for law enforcement & emergency response vessels
 - 37 outfitted
 - 53 more planned
- High-risk reduction potential at minimum cost
- Enables the effective management and coordination of maritime law enforcement operations and deployments, and supports local resources
- Facilitates cooperation and information sharing among law enforcement and maritime security partners
- Allows for the identification of vessels within secure areas at a safe distance





Evacuation/Recovery Modeling & Simulation Tool

- **Three Modules**

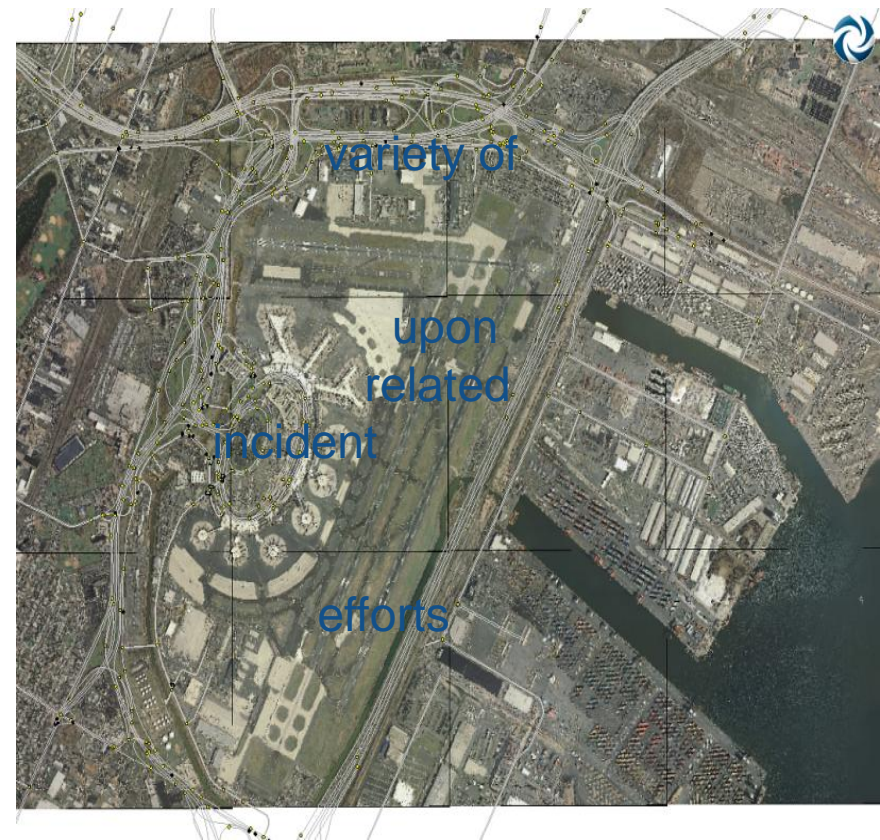
- Evacuation of Port Newark/Elizabeth and Newark Airport
- Recovery module for Port Newark/Elizabeth
- Recovery of Coast Guard Captain of the Port Zone

- Plan, evaluate, and outline strategies that support effective responses to a emergency events

- Review, evaluate, test and improve current and future strategies to emergency response and management in the Port

- Strengthens coordinated preparedness

- Helps determine optimal allocation of resources in times of crisis





Training / Drills & Exercise

• Training

- Maritime Security Awareness / TWIC Escort (PA)
- Guard Force / Personnel with Security Duties
- Port Awareness Response & Training (NYPD)
- Maritime Infrastructure Protection (NYPD)
- Facility Security Officer / Vessel Security Office
- Behavior Pattern Recognition
- Incident Command System

• Drills & Exercises

- Master Training & Exercise Plan (MTEP)



(Maritime) Secure the Cities

- Initiated in 2006 to protect high-risk urban areas from Rad/Nuc attacks
- Enhance regional capabilities to detect and interdict illicit radioactive materials
- Deploy standardized detection capabilities in a regionally coordinated way
- Develop and implement a COP to share sensor data & resolve alarms
- Conduct joint training and exercises





“A close partnership between government and the private sector is essential to ensuring critical infrastructure and key resource vulnerabilities are identified and corrected quickly.”

The National Strategy for Maritime Security



Public-Private Partnerships

CAPT Meredith Austin

Sector Delaware Bay



United States Coast Guard

Semper Paratus





Presentation Overview

- Review of Area of Responsibility (AOR)
- Laws/Authorities
- Types of Partnerships
- Why Partner?
- Case Study – Hurricane Irene Aug 2011
- Questions





SECTOR DELAWARE BAY

Area of Responsibility (AOR)





Sector Delaware Bay – *A Nationally Strategic Port*

- 2,000+ vessel arrivals annually
- 6 refineries
- 1 million bbls of crude arrive each day
- Largest perishable food port
- \$3.5B annual revenue
- \$1B in wages
- 30,000 direct jobs
- 3 major rail lines
- 4th most valuable fisheries landings port in the nation
- 5 Nuclear Power Plants





Sector Commander Authorities

Wears 6 Hats:

- Commanding Officer
- SAR Mission Coordinator
- Captain of the Port
- Federal Maritime Security Coordinator
- Federal On Scene Coordinator
- Officer in Charge, Marine Inspection





Captain of the Port Authority

- 33 CFR 6
 - Gives the COTP authority for the protection of ports, harbors, vessels, and waterfront facilities against accidents, negligence, and sabotage
 - COTP may enlist the aid of other agencies to protect the port and its resources.
- Regulatory Authority
 - Designates USCG Officers and Petty Officers as customs and law enforcement officers with full authority to enforce customs and other Federal laws in areas under Federal jurisdiction





Maritime Transportation Security Act

Some Highlights:

- Area Maritime Security Committees
- Area Maritime Security Plans
- Facility Response Plans
- 96 Hr Advance Notice of Arrivals
- TWIC
- Information Sharing – Homeport
- AMSTEP
- Grants





A Sector Has Many Partners:

- Other CG/Military Units
- Federal/State/Local Agencies
 - LE, Envir. Protection, Emergency Mgt
- Statutory Committees
 - Area Cmtee, AMSC, MTSRU
- “Homegrown” Committees
 - MAC, MOC





A Sector Has Many Partners:

- Port Community
 - Pilots, Seaman's Church Institute
- Vessel Owners/Operators
- Facility Owners/Operators
- NGOs
- Boating Community
- General Public





America's Waterway Watch (AWW) Citizen's Action Network (CAN)

- AWW is a public outreach program encouraging participants to report **suspicious activity** to the Coast Guard and/or other LE agencies.
- CAN is a program that allows civilians to help the U.S. Coast Guard save lives and property, prevent oil spills, and protect wildlife.





Why Partner?





Why Partner?

- It's good government
- It's good for business
- Consensus/cooperation improves buy-in and therefore compliance
- Engagement engenders trust
 - On both sides





Why Partner?

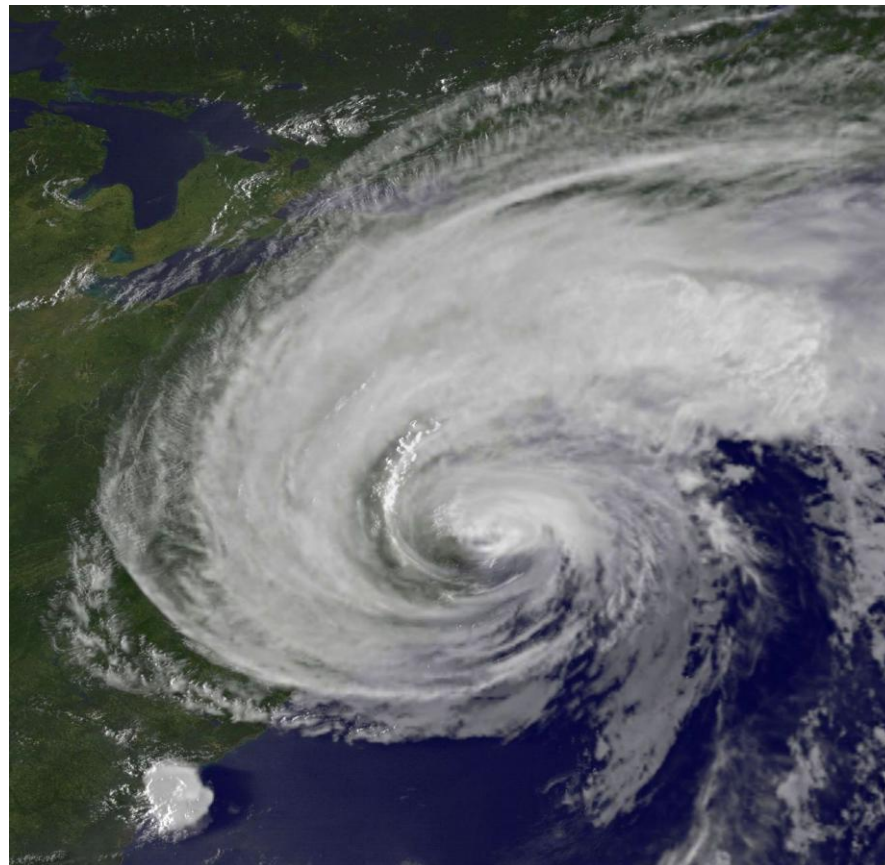
Bottom Line:

If we trust each other, information flows more easily, which improves our understanding of the threats that are out there—hopefully in time to **prevent** incidents.





Hurricane Irene Aug 2011





Before the Storm (24-27 Aug):

- Sent out Marine Safety Information Bulletins
- Broadcast Notice to Mariners
- Conducted facility, marina patrols
- Spoke with agents, pilots
- Changed Port Conditions as the storm approached to limit vessel movements





During the Storm 27-28 Aug:

- Monitored storm's progress
- Port was closed to vessel traffic
- Convened Maritime Transportation System Recovery Unit (MTSRU)



After the Storm (28-30 Aug):

- Conducted port damage assessments
- Convened MTSRU
 - As a result of the close cooperation of the MTSRU members, we were able to re-open the port to traffic the evening of the 28th





Questions?



Functional Fleet



Recent Events

MV POLARLIGHT
 564,160 cbft
 6,493 m³
 4,900 Pallets



MAIN PARTICULARS

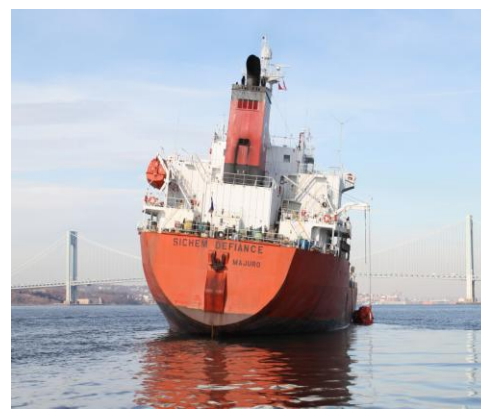
Flag:	Panama
Call sign:	3F80X2
Lloyd's No.:	5928373
Built:	1988
DMR:	19,247 mt
GRT:	11,417.366
Net:	15,100 m
Beam:	24.00 m
Summer draught:	9.07 m
Hold/Hatch/Cargo meas.:	44/7/6
Vertical air changes:	Vertical / 90
Differential pres.:	822 per hour
Canes:	2 x 38 mt 2 x 30 mt
Container capacity:	330 TEU or 132 FEU + 8 TEU
Deck fittings:	108
Steel barrow beds:	Ø12, 205 length
Circumfer. bar. beds:	Ø12.14 m IFO 300 PMS: 35
Circumfer. bar. aux.:	Ø12.25-6.0 m IFO 300 PMS: 35
Tank capacity:	1,640 mt IFO 300 PMS: 35 100 m ³ MDO DMS
Additional features:	Oil pre-piped



CSL ATLAS

The CSL Atlas uses her articulated boom to unload into a portside bulker alongside.

Built	1990
Classification	Single 1100 A1
Length Overall	227.40 metres
Breadth Moulded	33.00 metres
Depth Moulded	19.23 metres
Total Hold Capacity (including hatches)	70,737 cubic metres
Deadweight	67,634 tonnes
Draft	13.418 metres
Gross Tonnage	41,173 tonnes
Net Tonnage	21,901 tonnes
Bow Thruster	1100 kW
Length of Boom	77.00 metres
Discharge Rate	3,000 tonnes/hr
Coal
Oil	4,500 tonnes/hr



KING HAKAN

Flight 1549



Questions

A sunset over a marina. The sun is low on the horizon, casting a bright orange glow. A fire hydrant on the left is spraying a large plume of water towards the sun. In the foreground, there are several sailboats docked at a pier. The water is calm, reflecting the sunset colors.

Presented by

BC Michael J. Buckheit

FDNY Marine Battalion Commander