

Maritime Risk Symposium Public & Private Partnerships

Bethann Rooney
The Port Authority of
NY & NJ
November 7, 2011





**Ninety Years
of Investing
in the Region**

THE PORT AUTHORITY OF NY & NJ



The Port of New York & New Jersey



- First in overall risk
- Top 5 for overall commercial, economic & strategic importance
- 150 assets of national significance
- 185 +/- regulated maritime facilities
 - 13 (7%) on PA property
- 408,000 vessel movements a year – 5,400 deep draft arrivals
- 146 square miles of navigable waterways
- 576 miles of waterfront



Security Partners/Interested Agencies

•Department of Homeland Security

- Coast Guard
- Customs and Border Protection
- Immigration & Customs Enforcement
- Transportation Security Administration
- FEMA
- APHIS

•Department of Defense

- Defense Threat Reduction Agency
- Army Corps of Engineers

•Department of Justice

- FBI
- Office of Intelligence & Security
- Central Intelligence Agency
- National Security Council
- ATF
- Drug Enforcement Admin

Department of Commerce

Central Intelligence Agency

Food & Drug Administration

•Department of Transportation

- Federal Railway Administration
- Federal Highway Administration
- Maritime Administration

•Department of Commerce

- NOAA

•Department of the Interior

- Fish and Wildlife

•Department of Agriculture

•Department of Energy

•Department of Health & Human Services

•Department of State

•27 state and local law enforcement and emergency response agencies



Stakeholder Coordination & Partnerships (Sample)

PANYNJ Initiated

- **Tenant Security Working Group**
- **Law Enforcement Working Group**
- **Annual Port Expo**
- **Community Policing & Crime Watch Program**
- **Port Security Caucus**
- **Port Security Task Force**

PANYNJ Supported

- **Area Maritime Security Committee**
- **DHS Center of Excellence on Maritime Security & Port Resiliency**
- **Federal Task Forces**
 - **Joint Terrorism Task Force (JTTF) – Newark and New York**
 - **Border Enforcement Security Task (BEST) Force**
 - **DEA Task Force on Narcotics**
- **New Jersey Regional Information Operations Center (RIOC)**
- **Harbor Watch Program**



Area Maritime Security Committee

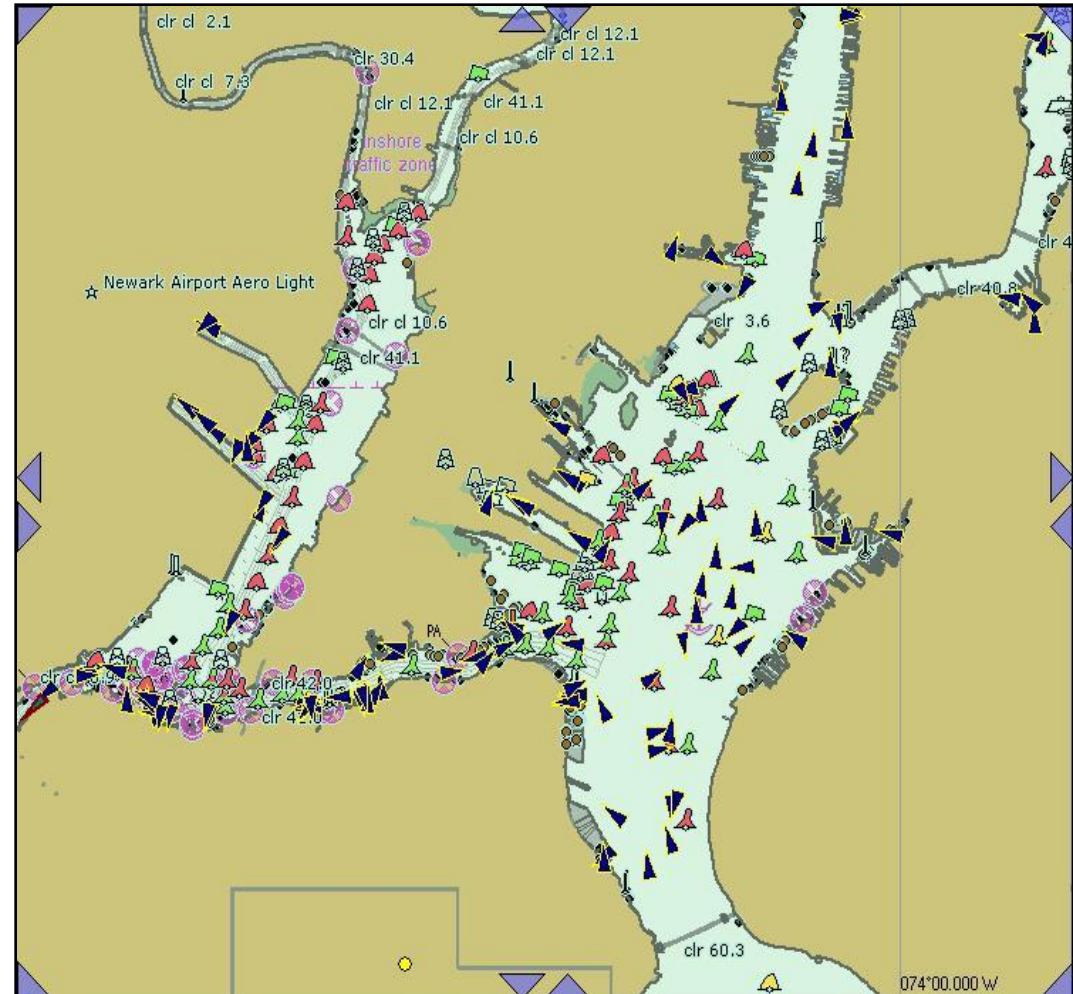
- **Award for Outstanding Regional Partnership (2011 UASI Conf)**
- **Robust management structure & active participation of port partners**
- **Portwide Strategic Risk Management Plan (since 2005)**
 - 173 projects and initiatives (80% +/- complete or underway)
 - Latest revision September 2011 (9 objectives / 30 initiatives)
- **All hazards approach (close coordination with Harbor Ops and Area Committees)**
- **Administers \$282 M of Port Security Grant Program**

We make a
big world
smaller



Blue Force Tracking

- Encrypted AIS for law enforcement & emergency response vessels
 - 37 outfitted
 - 53 more planned
- High-risk reduction potential at minimum cost
- Enables the effective management and coordination of maritime law enforcement operations and deployments, and supports local resources
- Facilitates cooperation and information sharing among law enforcement and maritime security partners
- Allows for the identification of vessels within secure areas at a safe distance





Evacuation/Recovery Modeling & Simulation Tool

- **Three Modules**

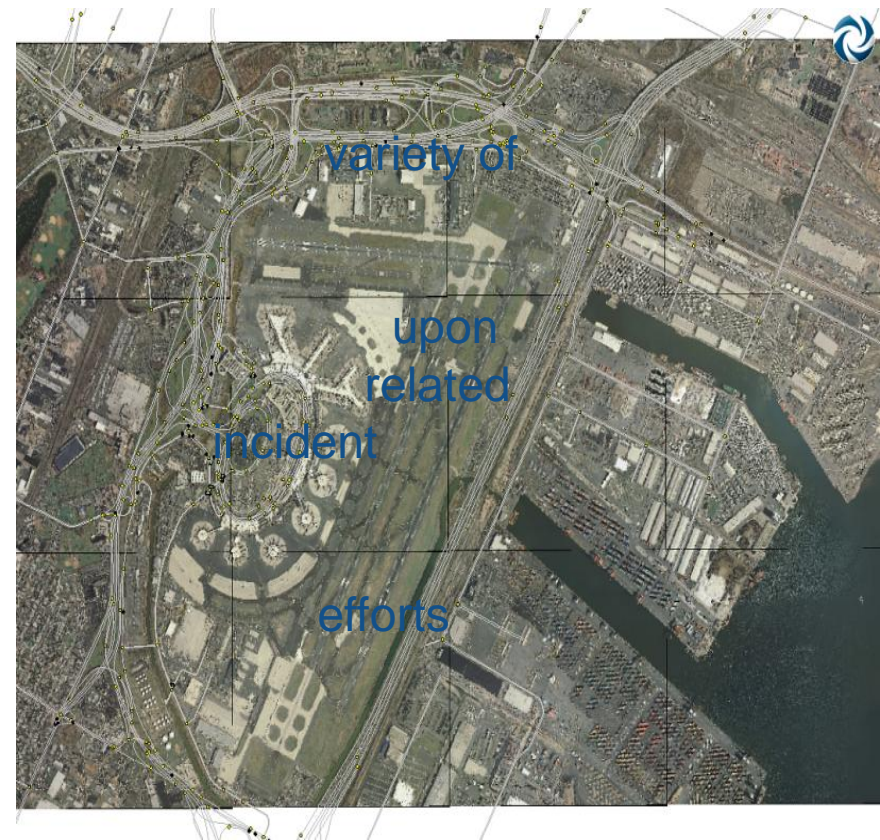
- Evacuation of Port Newark/Elizabeth and Newark Airport
- Recovery module for Port Newark/Elizabeth
- Recovery of Coast Guard Captain of the Port Zone

- Plan, evaluate, and outline strategies that support effective responses to a emergency events

- Review, evaluate, test and improve current and future strategies to emergency response and management in the Port

- Strengthens coordinated preparedness

- Helps determine optimal allocation of resources in times of crisis





Training / Drills & Exercise

• Training

- Maritime Security Awareness / TWIC Escort (PA)
- Guard Force / Personnel with Security Duties
- Port Awareness Response & Training (NYPD)
- Maritime Infrastructure Protection (NYPD)
- Facility Security Officer / Vessel Security Office
- Behavior Pattern Recognition
- Incident Command System

• Drills & Exercises

- Master Training & Exercise Plan (MTEP)



(Maritime) Secure the Cities

- Initiated in 2006 to protect high-risk urban areas from Rad/Nuc attacks
- Enhance regional capabilities to detect and interdict illicit radioactive materials
- Deploy standardized detection capabilities in a regionally coordinated way
- Develop and implement a COP to share sensor data & resolve alarms
- Conduct joint training and exercises





“A close partnership between government and the private sector is essential to ensuring critical infrastructure and key resource vulnerabilities are identified and corrected quickly.”

The National Strategy for Maritime Security