

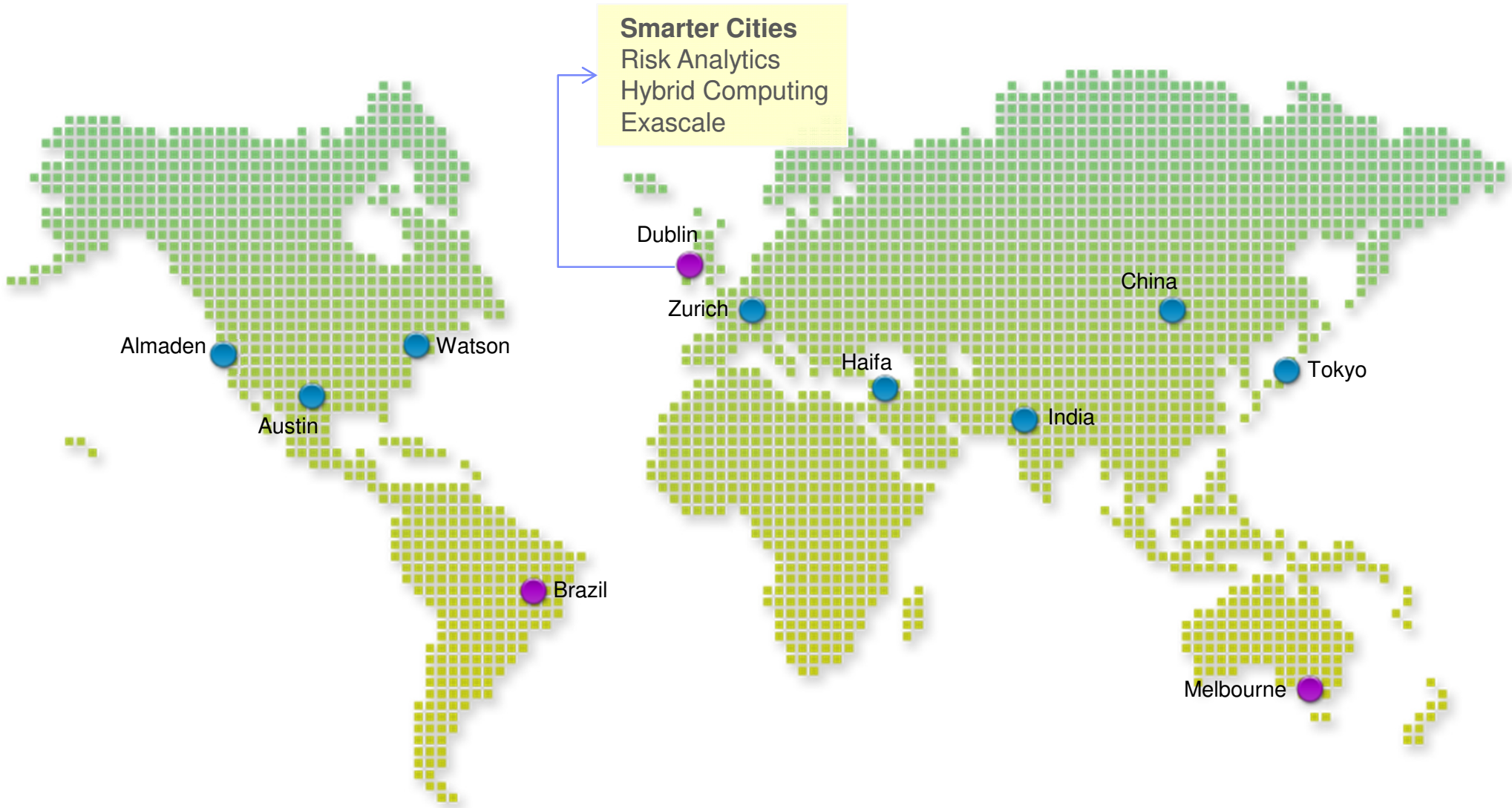
Smart Cities – How Can Data Mining and Optimization Shape Future Cities?

Francesco Calabrese

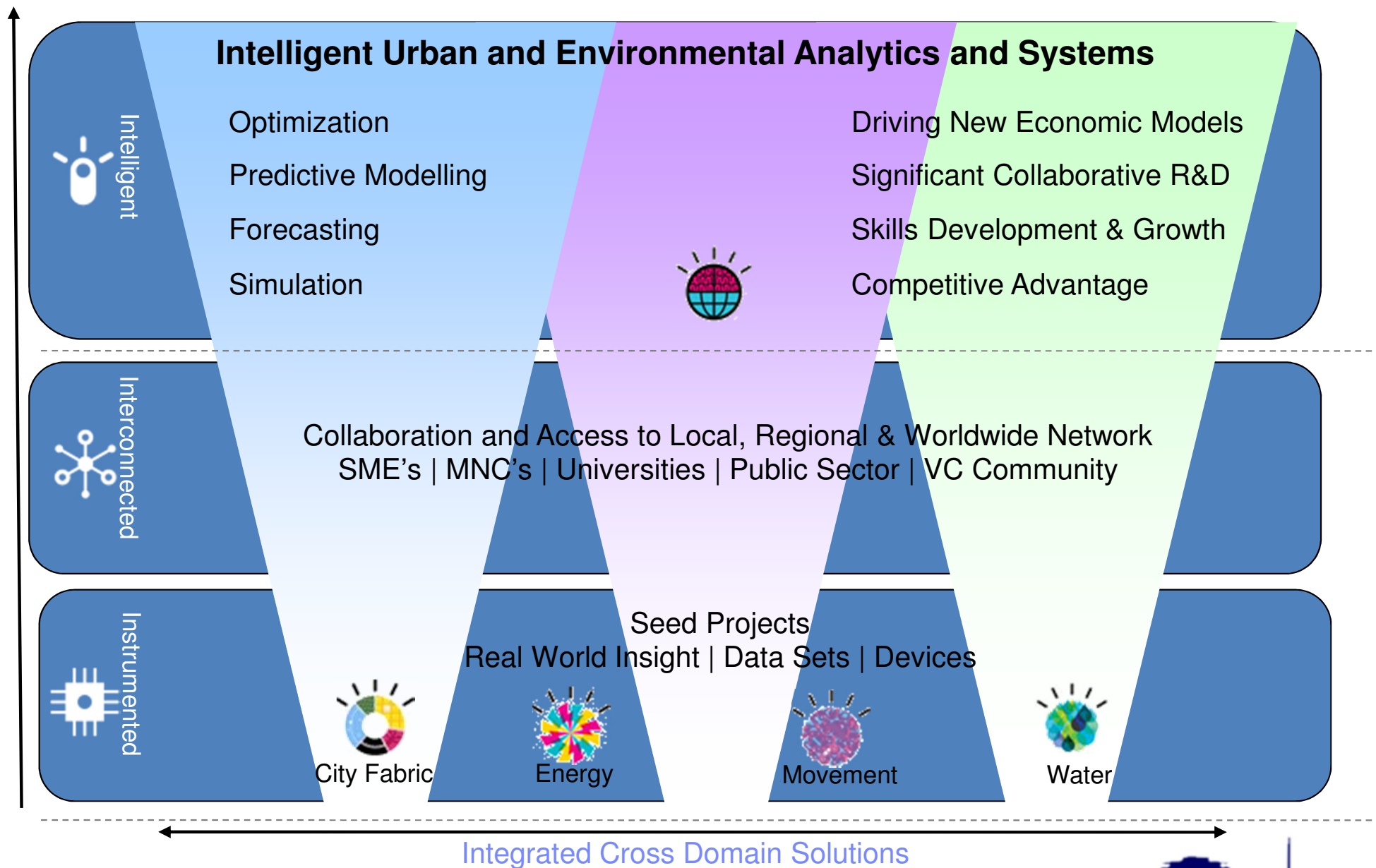
Advisory Research Staff Member, Analytics & Optimization
Smarter Cities Technology Centre
IBM Research and Development - Ireland



IBM Research Worldwide



Smarter Cities Technology Centre



Many Visions of what a Smarter City might be



A “mission control” for infrastructure



A showcase for urban planning concepts



A totally “wired” city



A self-sufficient, sustainable eco-city



But we know they'll intensively leverage ICT technologies



Intelligent Transportation Systems

- Integrated Fare Management
- Road Usage Charging
- Traffic Information Management

Telecommunications

- Fixed and mobile operators
- Media Broadcasters

Energy Management

- Network Monitoring & Stability
- Smart Grid – Demand Management
- Intelligent Building Management
- Automated Meter Management

Public Safety

- Surveillance System
- Emergency Management Integration
- Micro-Weather Forecasting

Water Management

- Water purity monitoring
- Water use optimization
- Waste water treatment optimization

Environmental Management

- City-wide Measurements
- KPI's
- CO2 Management
- Scorecards
- Reporting



How can we help cities achieve their aspirations?



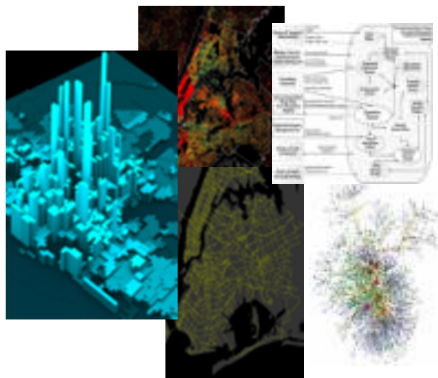
1. Sensor data assimilation

- Data diversity, heterogeneity
- Data accuracy, sparsity
- Data volume



1. Modelling human demand

- Understand how people use the city infrastructure
- Infer demand patterns



1. Operations & Planning

- Factor in uncertainty



Outline

Sensor data assimilation

- Continuous assimilation of real-time traffic data

Understanding/Modeling human demand

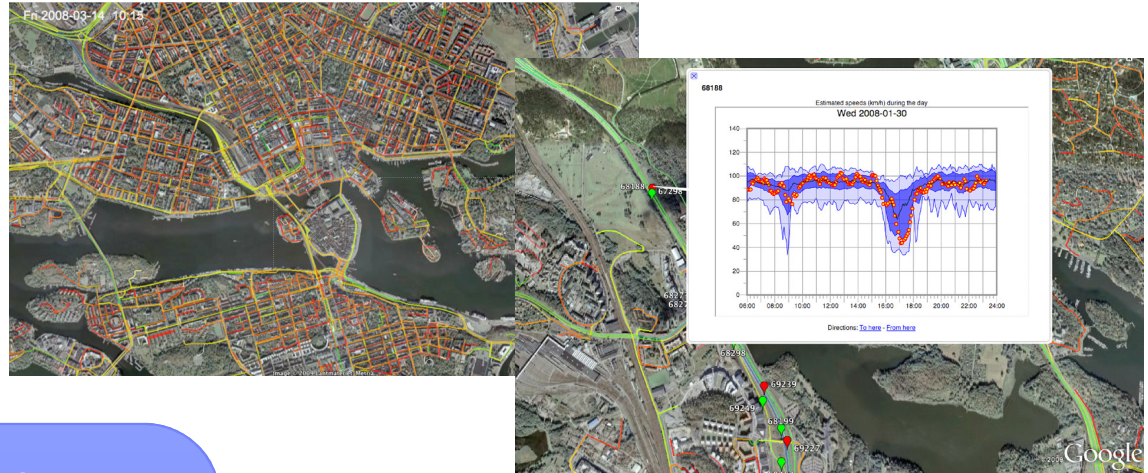
- Characterizing urban dynamics from digital traces

Operations & Planning

- Leveraging mathematical programming for planning in an uncertain world



Our Stockholm Experience (2009)



GPS devices

- Induction loops
- Axle counters
- Traffic lights
- Parking meters
- Cameras
- MCS
- Weather stations
- Microblogs



Real-time
assimilation,
mediation
(e.g. de-noising),
aggregation
(e.g. key traffic
metrics)

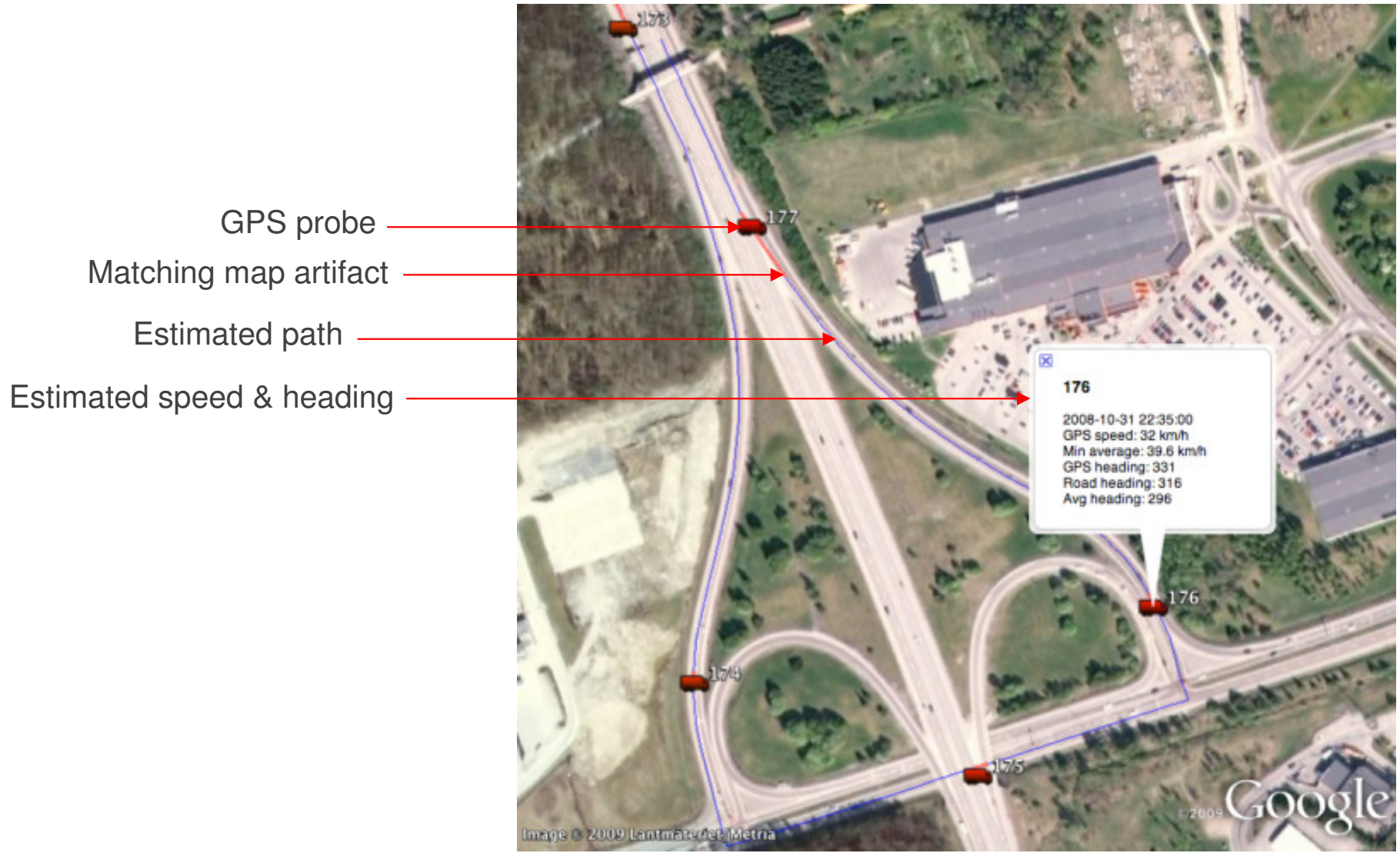


Noisy GPS Data

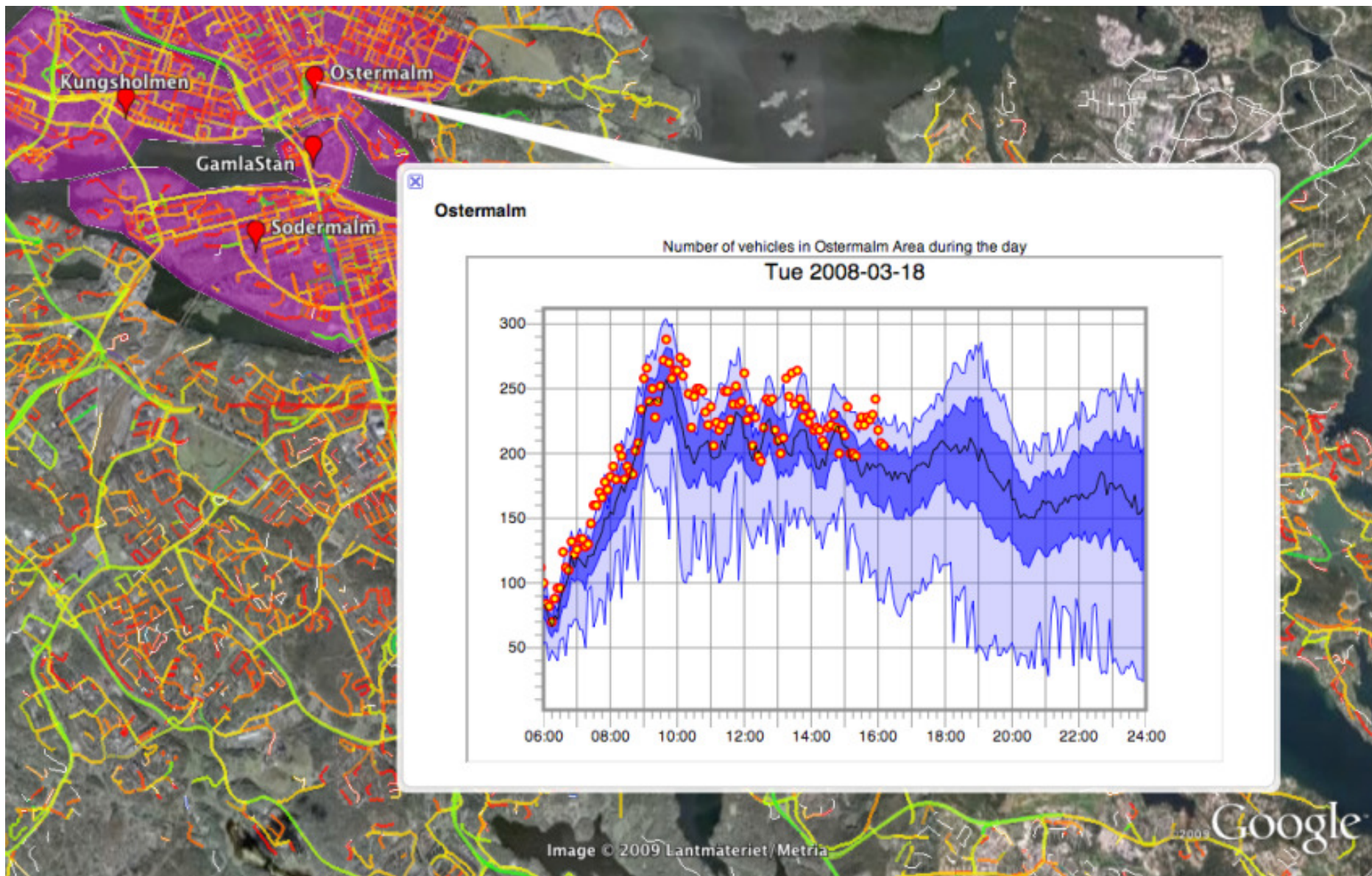
- To become useful, GPS data has to be related to the underlying infrastructure (e.g., road or rail network) by means of map matching algorithms, which are often computationally expensive
- In addition, GPS data is sampled at irregular possibly large time intervals, which requires advanced analytics to reconstruct with high probability GPS trajectories
- Finally, GPS data is not accurate and often needs to be cleaned to remove erroneous observations.



Real-Time Geomapping and Speed Estimation



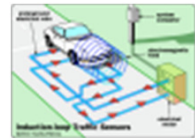
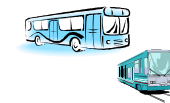
Real-Time Traffic Information



Our Dublin Experience (2011)

- Complex system & analytics challenges

- Data diversity, heterogeneity
- Data accuracy, sparsity
- Data volume



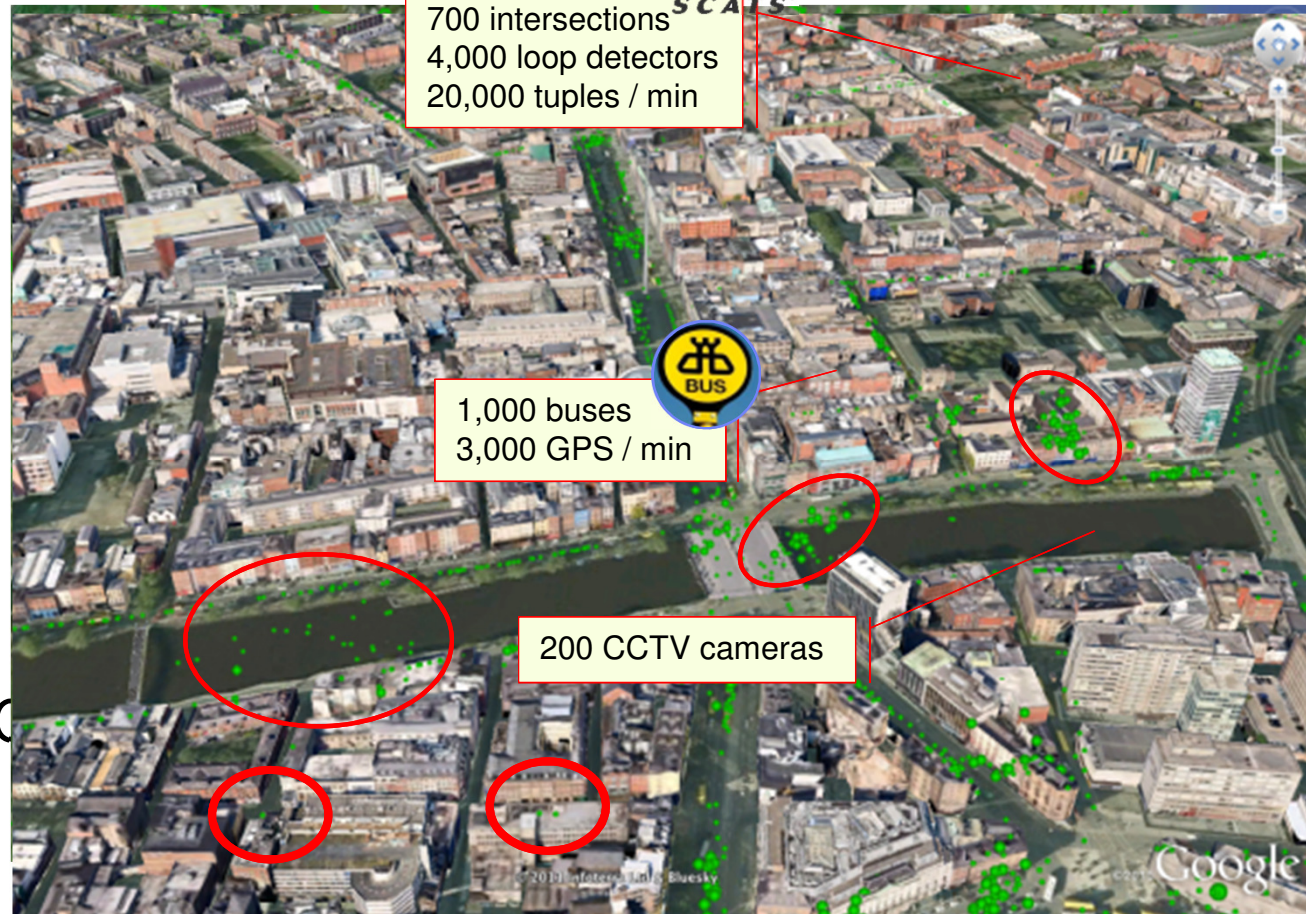
- Active relationship with DCC

- Deployed in Dublin's DoT



Our Dublin Experience (2011)

- Complex system & analytics challenges
 - Data diversity, heterogeneity
 - Data accuracy, sparsity
 - Data volume



- Active relationship with DCU
- Deployed in Dublin's DoT

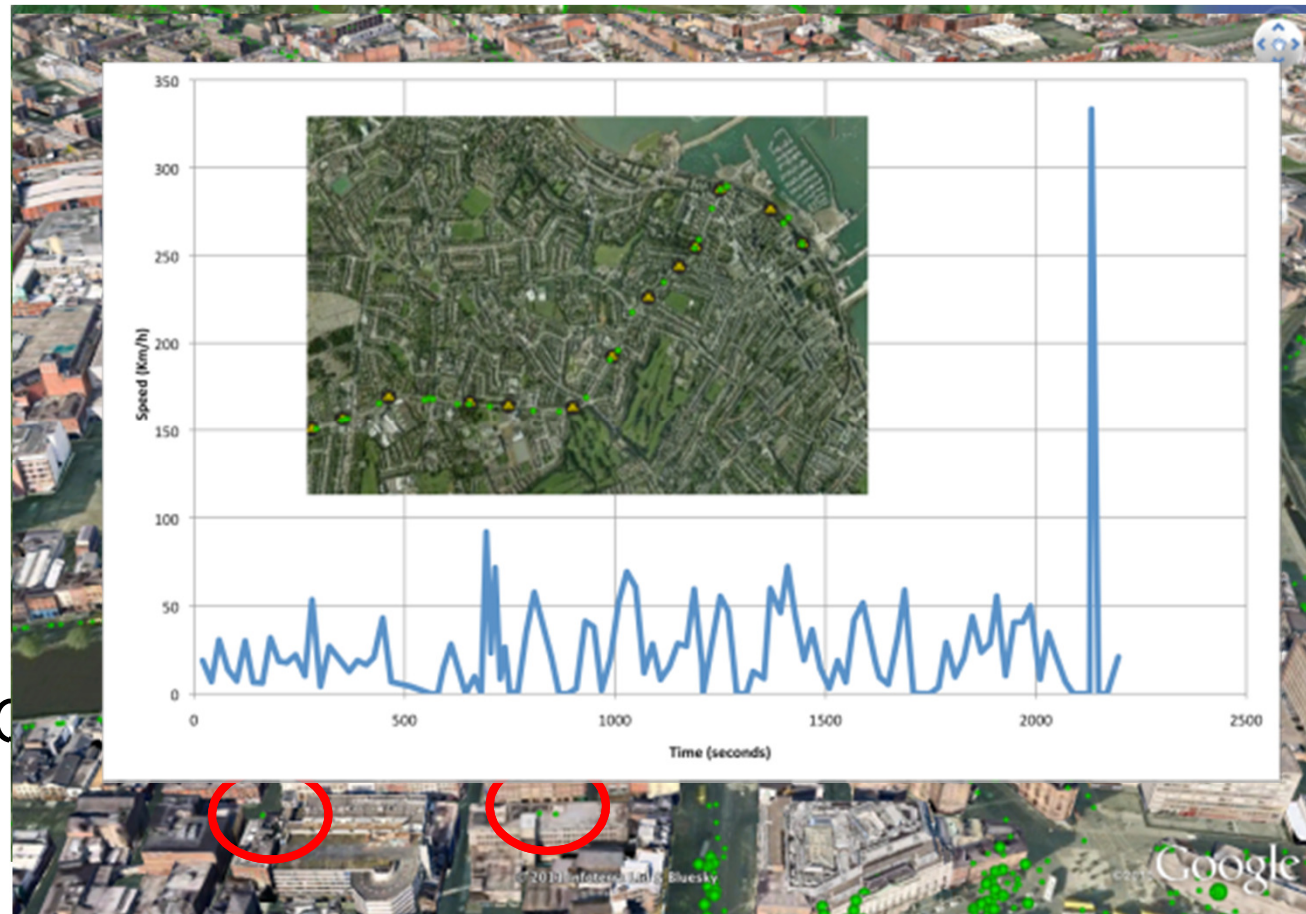


Our Dublin Experience (2011)

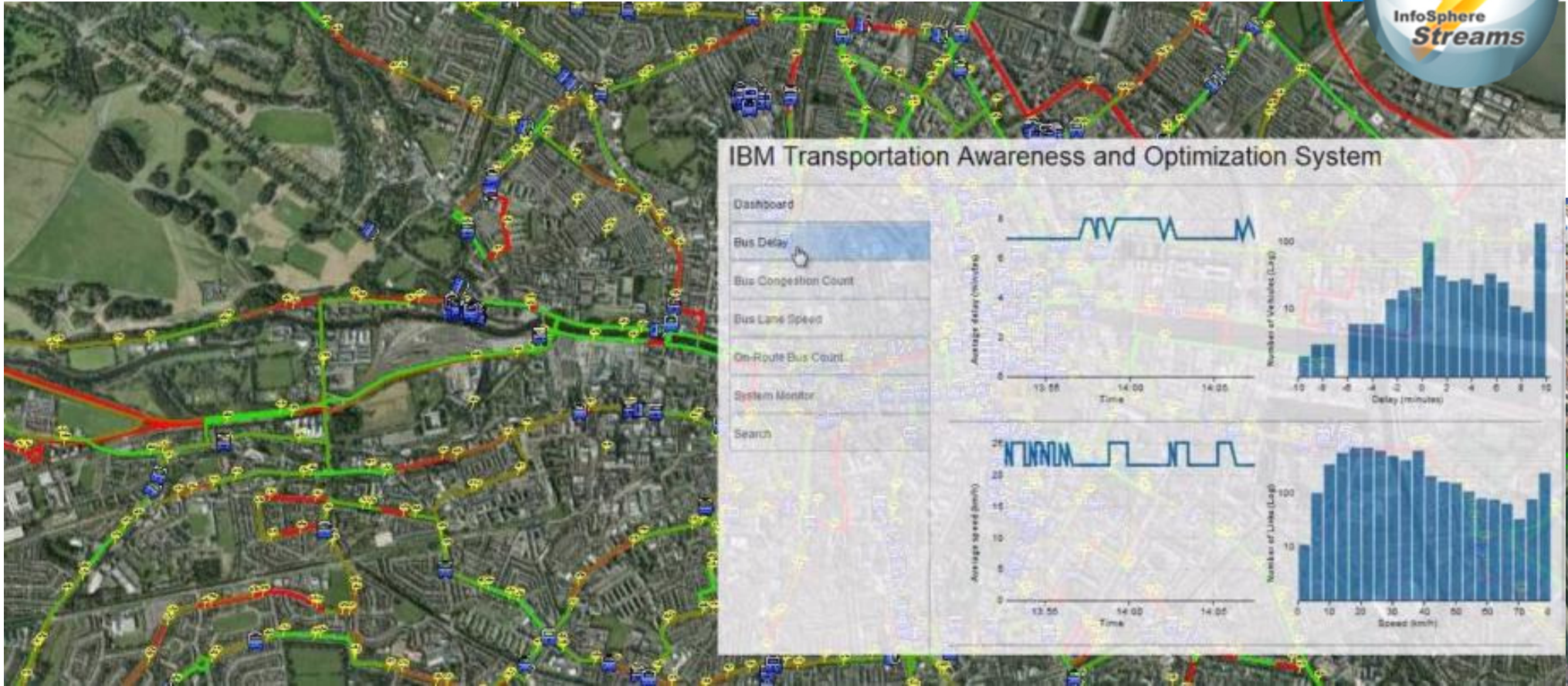
- Complex system & analytics challenges
 - Data diversity, heterogeneity
 - Data accuracy, sparsity
 - Data volume



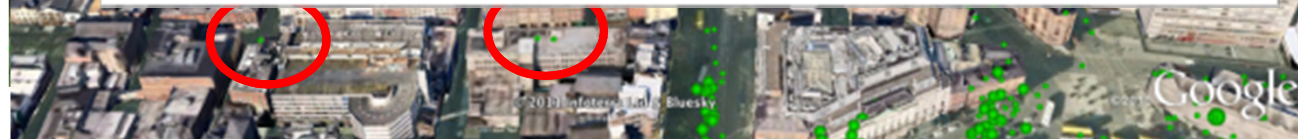
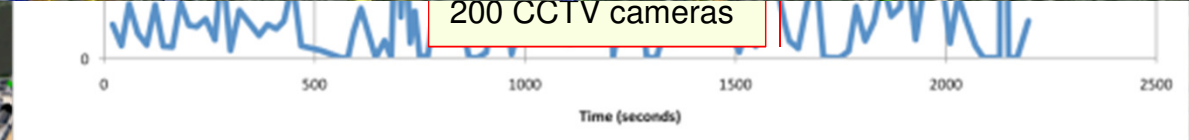
- Active relationship with DCU
- Deployed in Dublin's DoT



Our Dublin Experience (2011)



- Active relationship with DCU
- Deployed in Dublin's DoT



Outline

Sensor data assimilation

- Continuous assimilation of real-time traffic data

Understanding/Modeling human demand

- Characterizing urban dynamics from digital traces

Operations & Planning

- Leveraging mathematical programming for planning in an uncertain world



Pervasive Technologies Datasets as Digital Footprints

Understand how people use the city's infrastructure

- Mobility (transportation mode)
- Consumption (energy, water, waste)
- Environmental impact (noise, pollution)



Potentials

- Improve city's services
 - Optimize planning
 - Minimizing operational costs
- Create feedback loops with citizens to reduce energy consumption and environmental impact

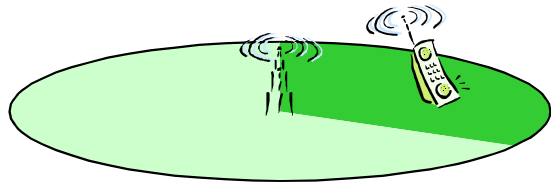


Understanding Urban Dynamics

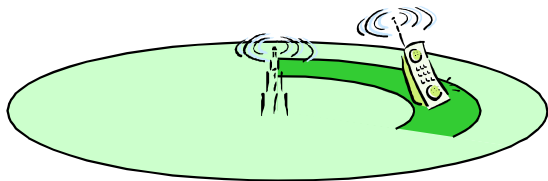
- Research goals
 - Understanding human behavior in terms of mobility demand
 - Analyzing and predicting transportation needs in short & long terms
- Outcome
 - Help citizens navigating the city
 - Design adaptive urban transportation systems
 - Support urban planning and design



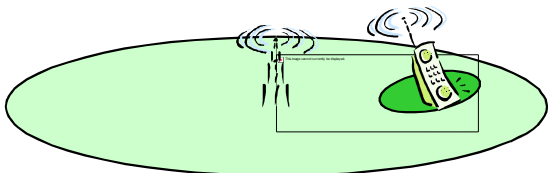
Mobile phones to detect human mobility and interactions



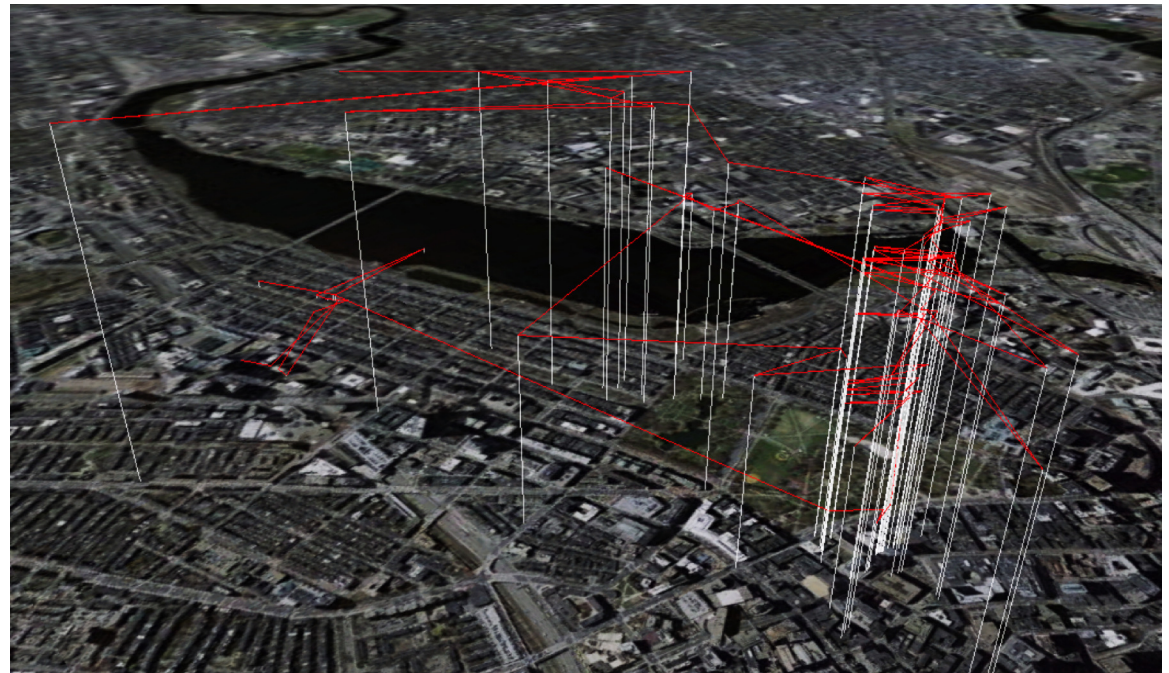
Angle of Arrival (AOA)



Timing Advance (TA)



Received Signal Strength (RSS)



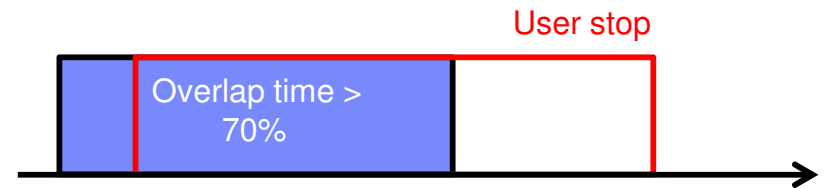
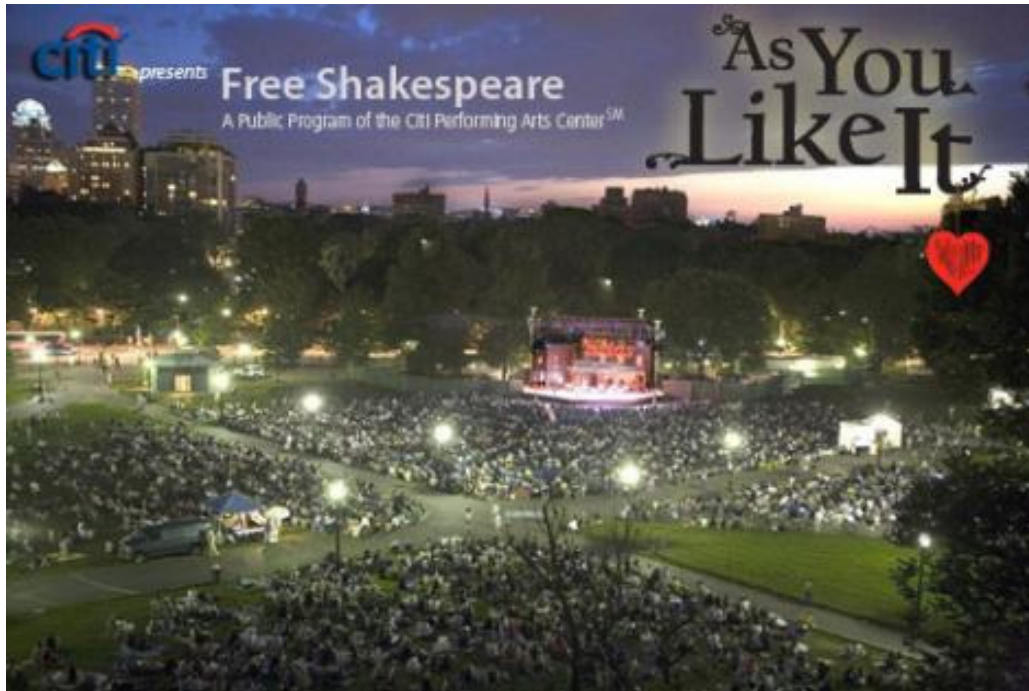
Example of extracted trajectory over 1 week

F. Calabrese, M. Colonna, P. Lovisolo, D. Parata, C. Ratti, Real-Time Urban Monitoring Using Cell Phones: a Case Study in Rome, IEEE Transactions on Intelligent Transportation Systems, 2011.



How social events impact mobility in the city

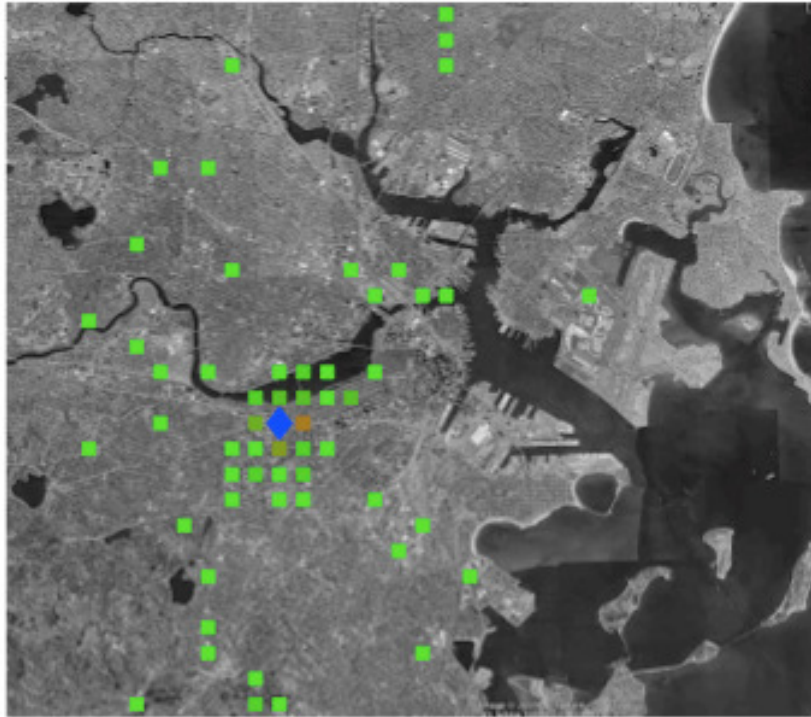
Modeling and predicting non-routine additive origin-destination flows in the city



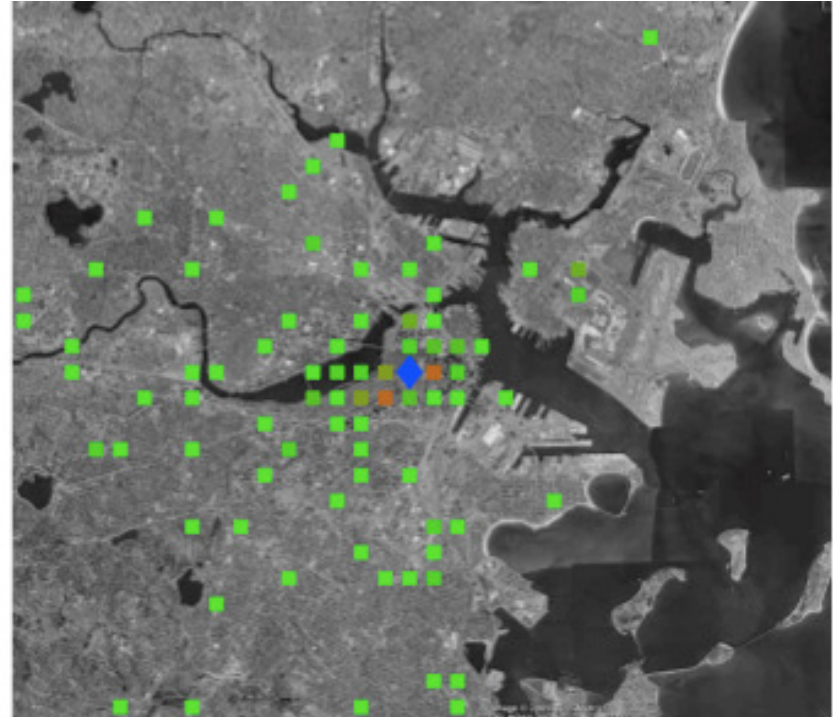
F. Calabrese, F. Pereira, G. Di Lorenzo, L. Liu, C. Ratti, "The geography of taste: analyzing cell-phone mobility and social events", In International Conference on Pervasive Computing, 2010.



Detecting and predicting travel demand



(b) Boston Red Sox vs. Baltimore



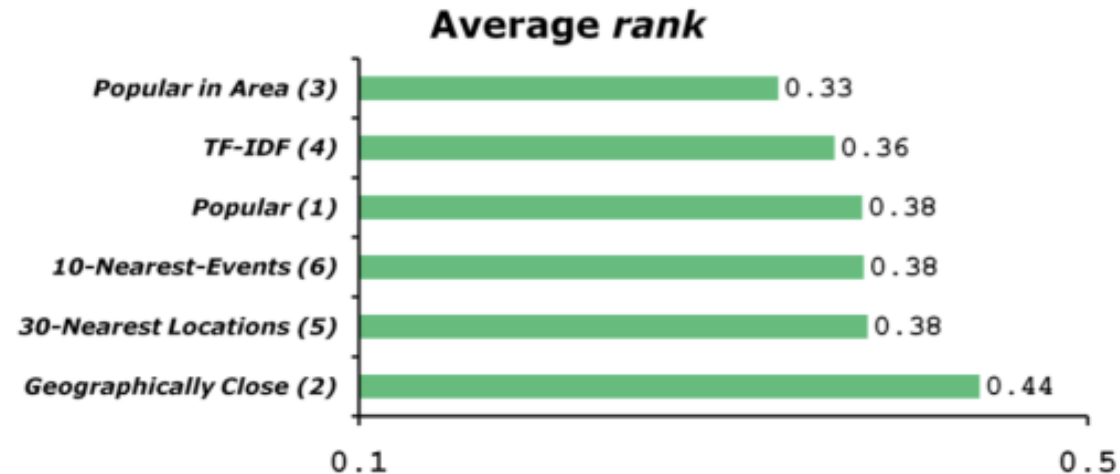
(d) Shakespeare on the Boston



Applications

- Improving event planning & management
 - Predicting the effect of an event on the urban transportation
 - Adapting public transit (schedules and routes) to accommodate additional demand

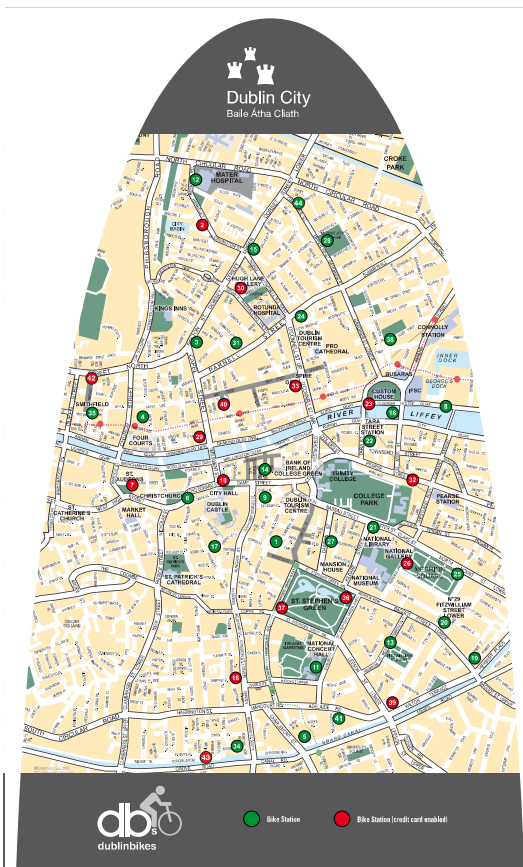
- Location based services
 - Recommending social events
 - Cold start problem



Modeling Urban Mobility: bike sharing system

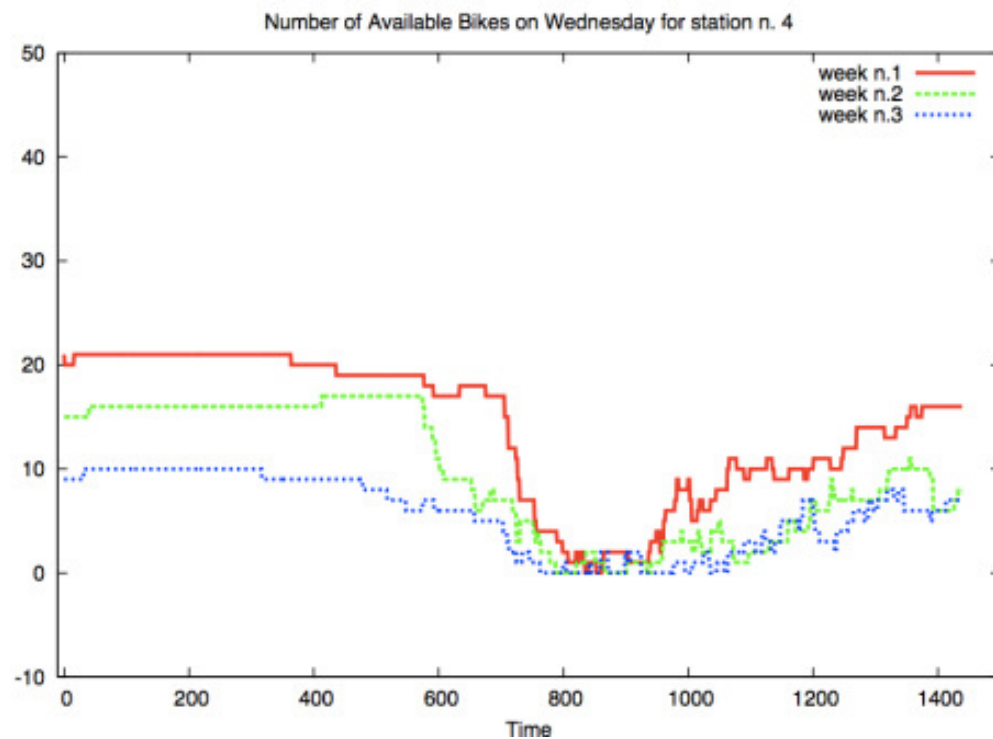
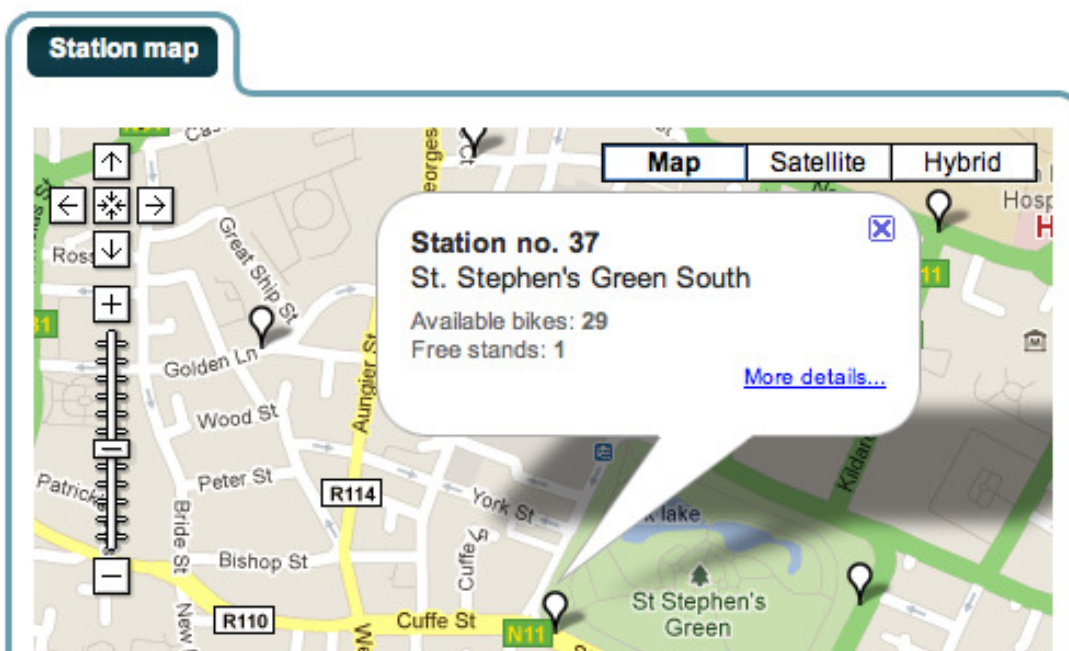
Bike sharing systems

- Implemented in many cities, starting from Europe
- Used by locals and tourists
- Reducing private and other public transport demand



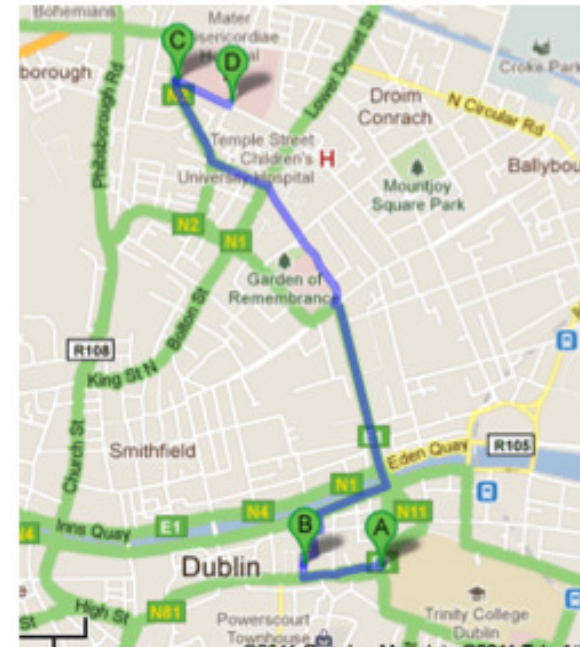
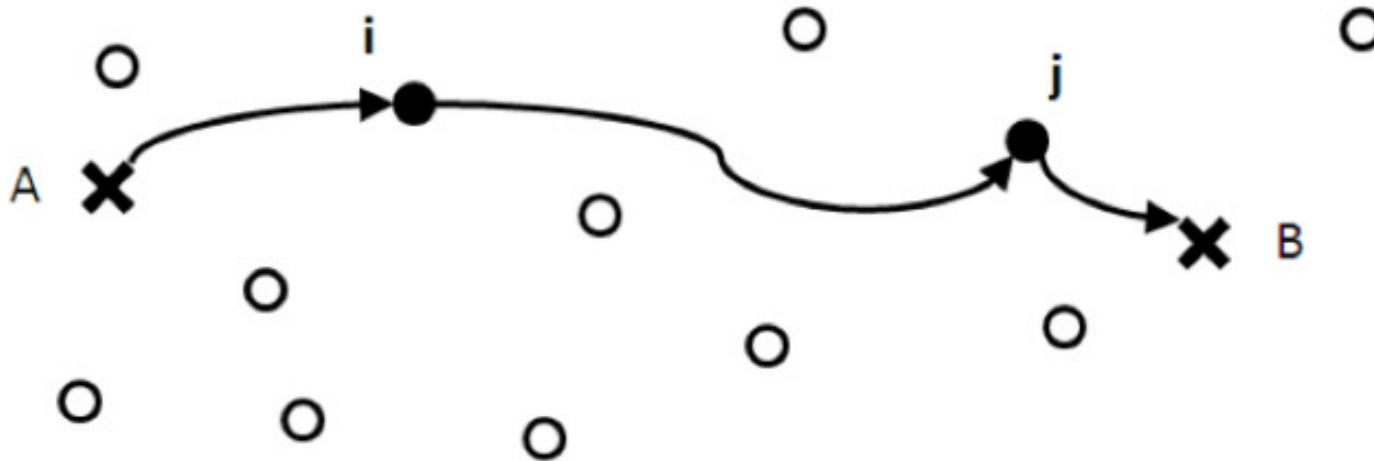
Modeling Urban Mobility: Spatio-Temporal Patterns

- Analyze spatio-temporal pattern of bike availability
- Infer correlation between stations (origin and destination of bike rides)
- Predict, long and short term
 - Number of available bikes
 - Number of available returning spots

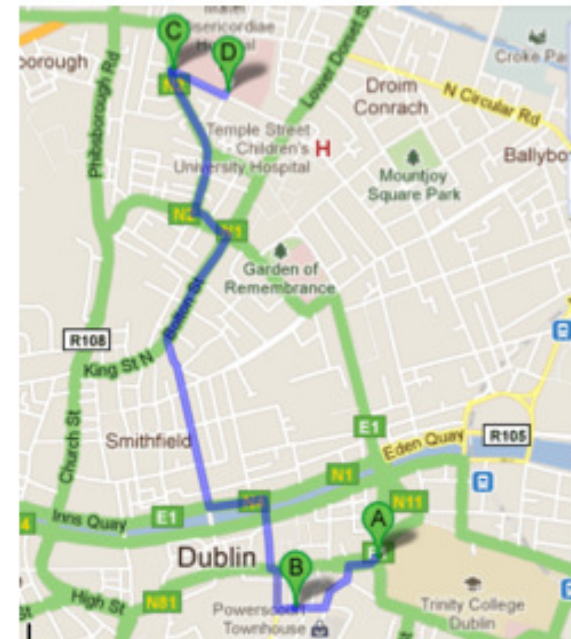


Modeling Urban Mobility: journey advisor

- Build a journey advisor application able to suggest which station to use to
 - Minimize travel time
 - Maximize probability to find and return bike



(a) the best ($t = 600$)



(c) the best ($t = 800$)

Outline

Sensor data assimilation

- Continuous assimilation of real-time traffic data

Understanding/Modeling human demand

- Characterizing urban dynamics from digital traces

Operations & Planning

- Leveraging mathematical programming for planning in an uncertain world

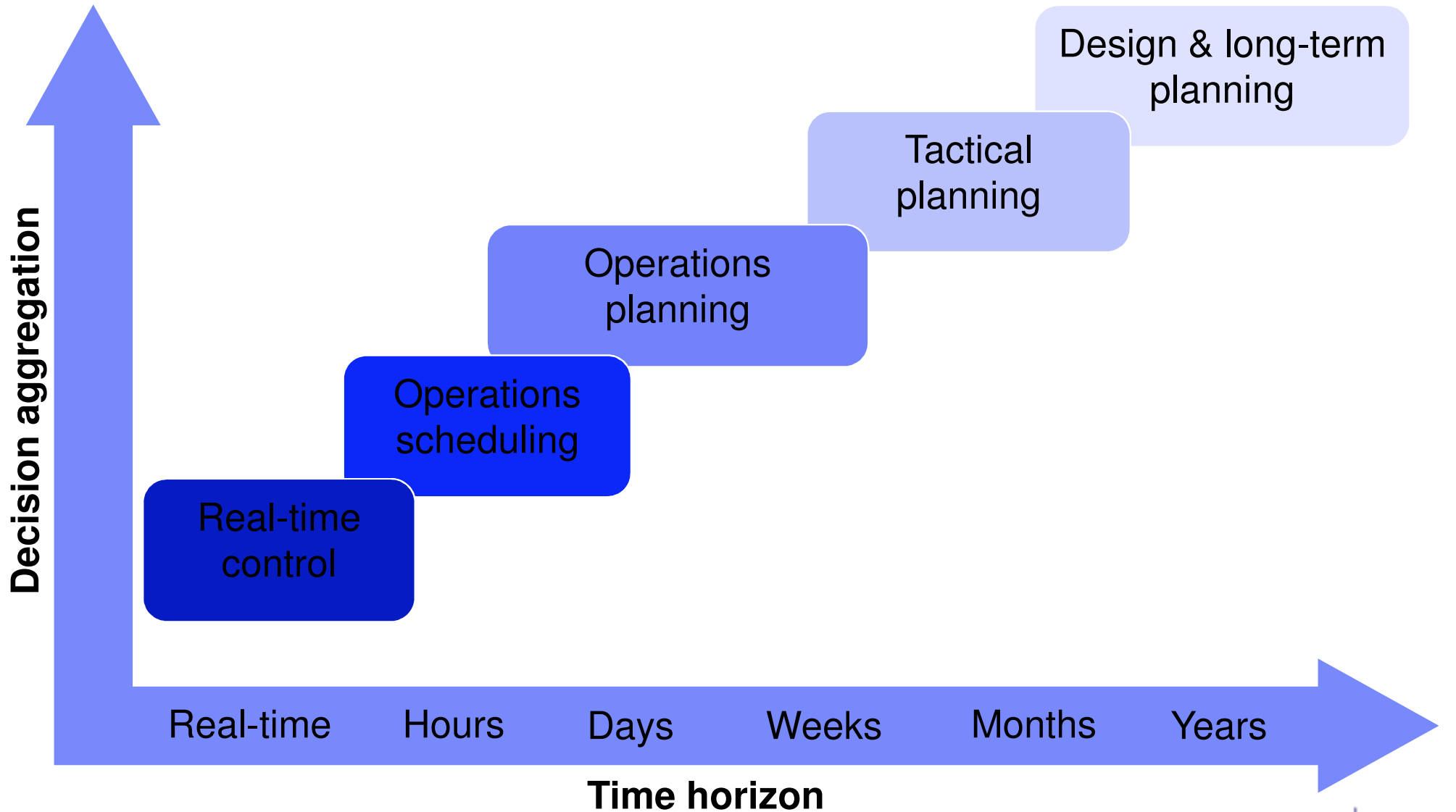


Overview

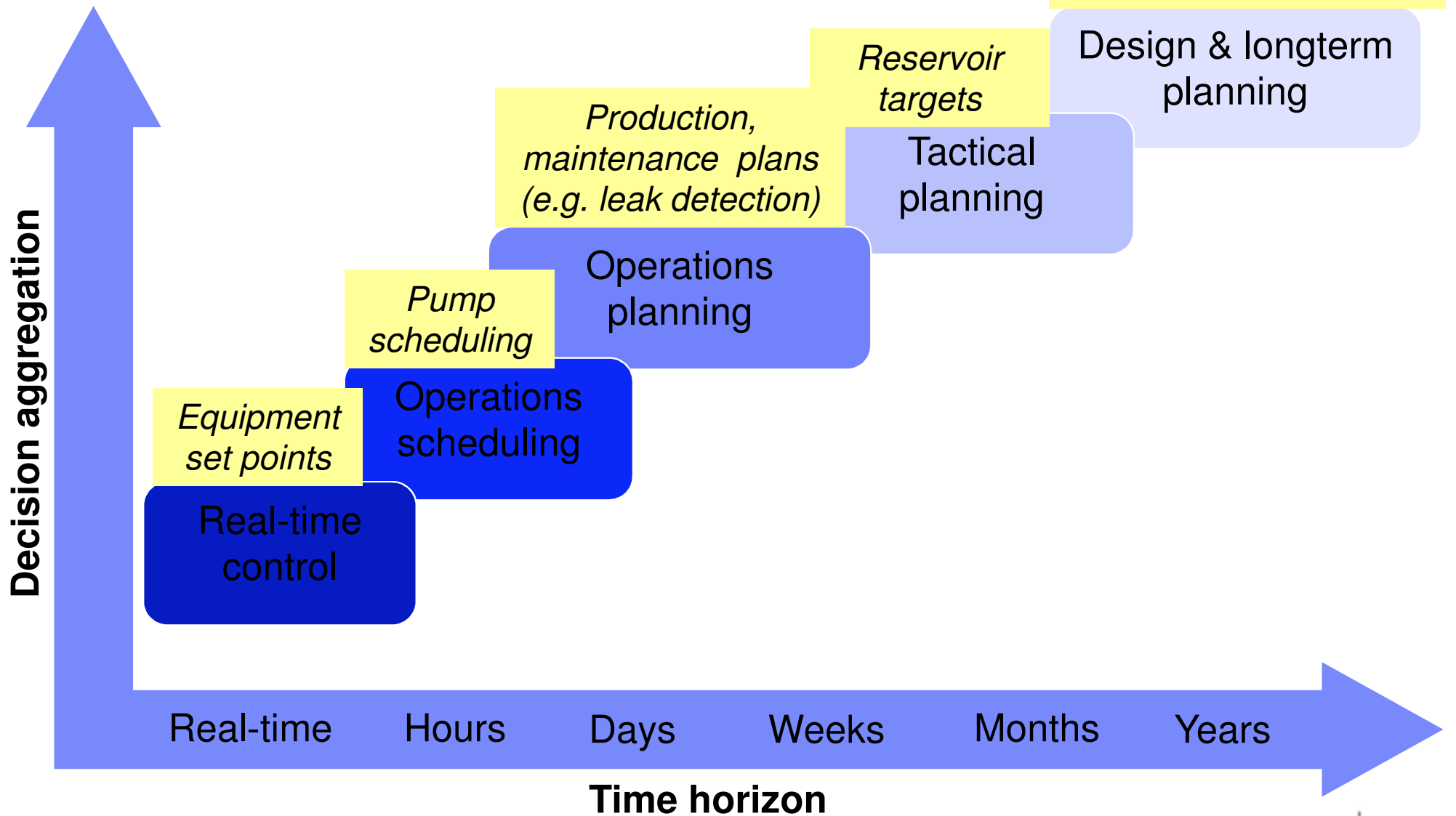
- Design and planning of urban infrastructures
 - Transportation
 - Water distribution and treatment
 - Energy
- “Standard” optimization approaches minimize costs while meeting demand
- Additional environmental objectives
 - Minimize carbon footprint
 - Meet pollution reduction targets
- Additional challenge – capturing uncertainty, such as:
 - Population growth and urban dynamics
 - Rainfall
 - Renewable energy sources
 - Energy costs



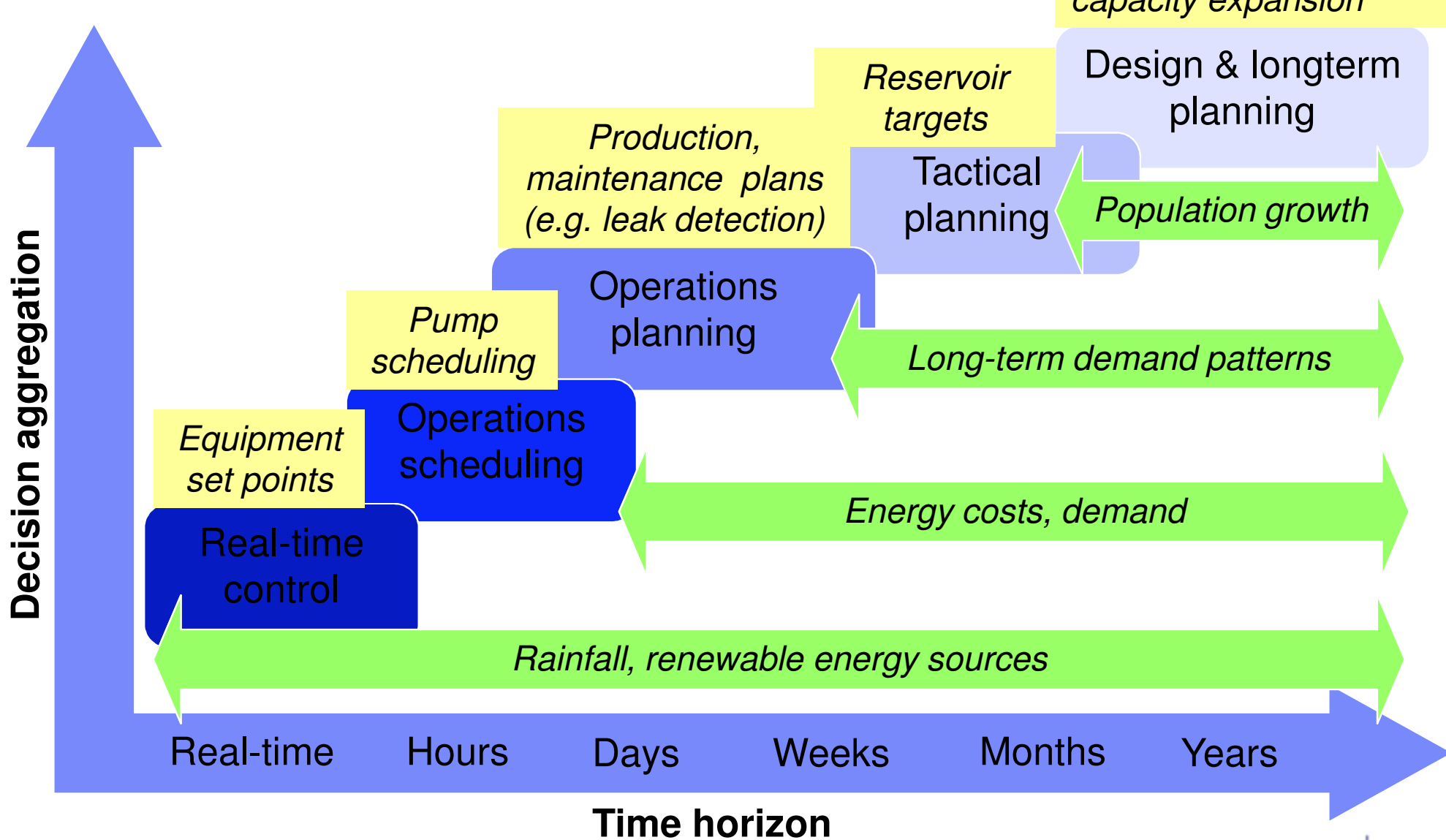
Planning Levels



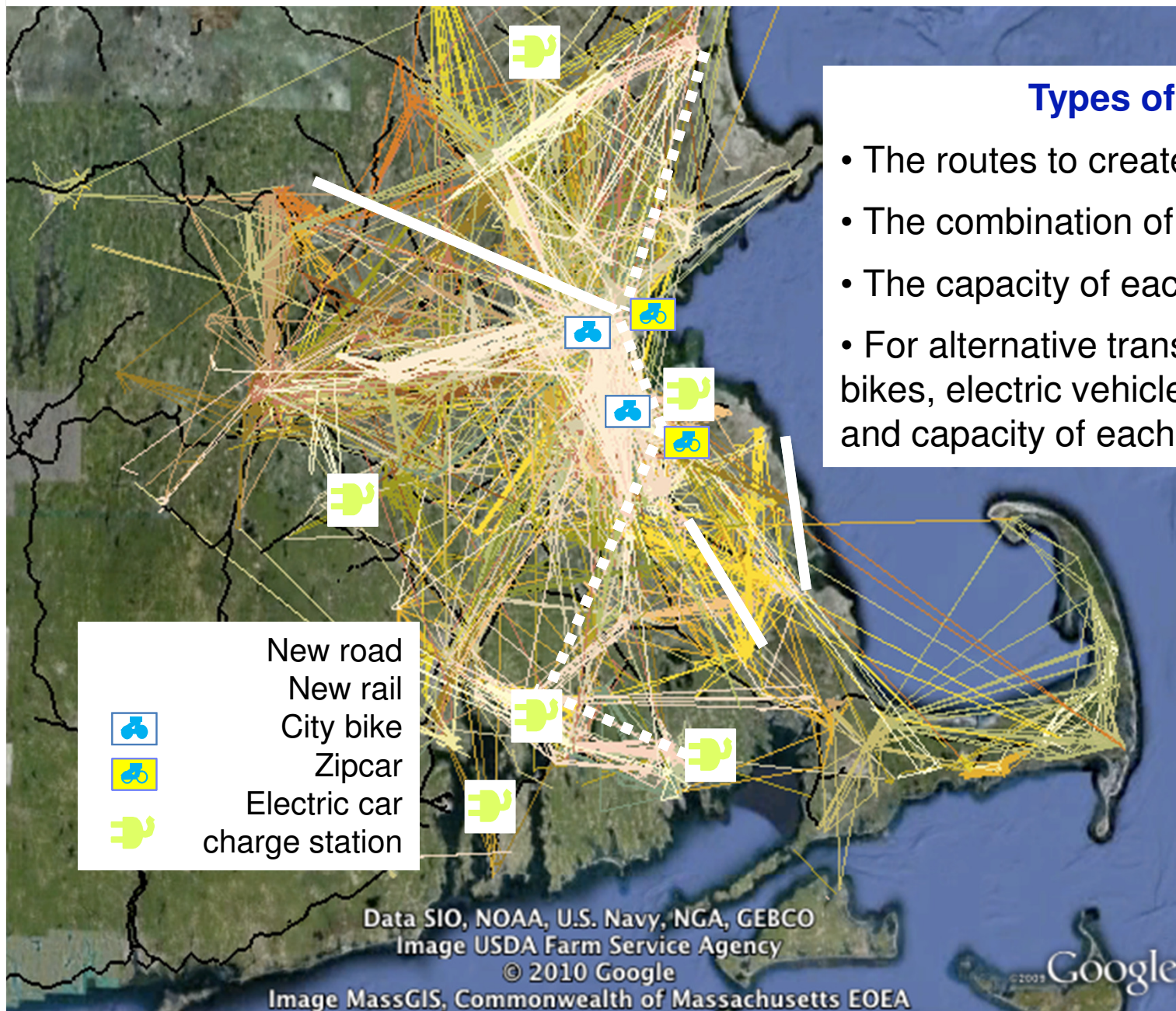
Examples of Decisions



Impact of Uncertainty



Example: Transportation infrastructure

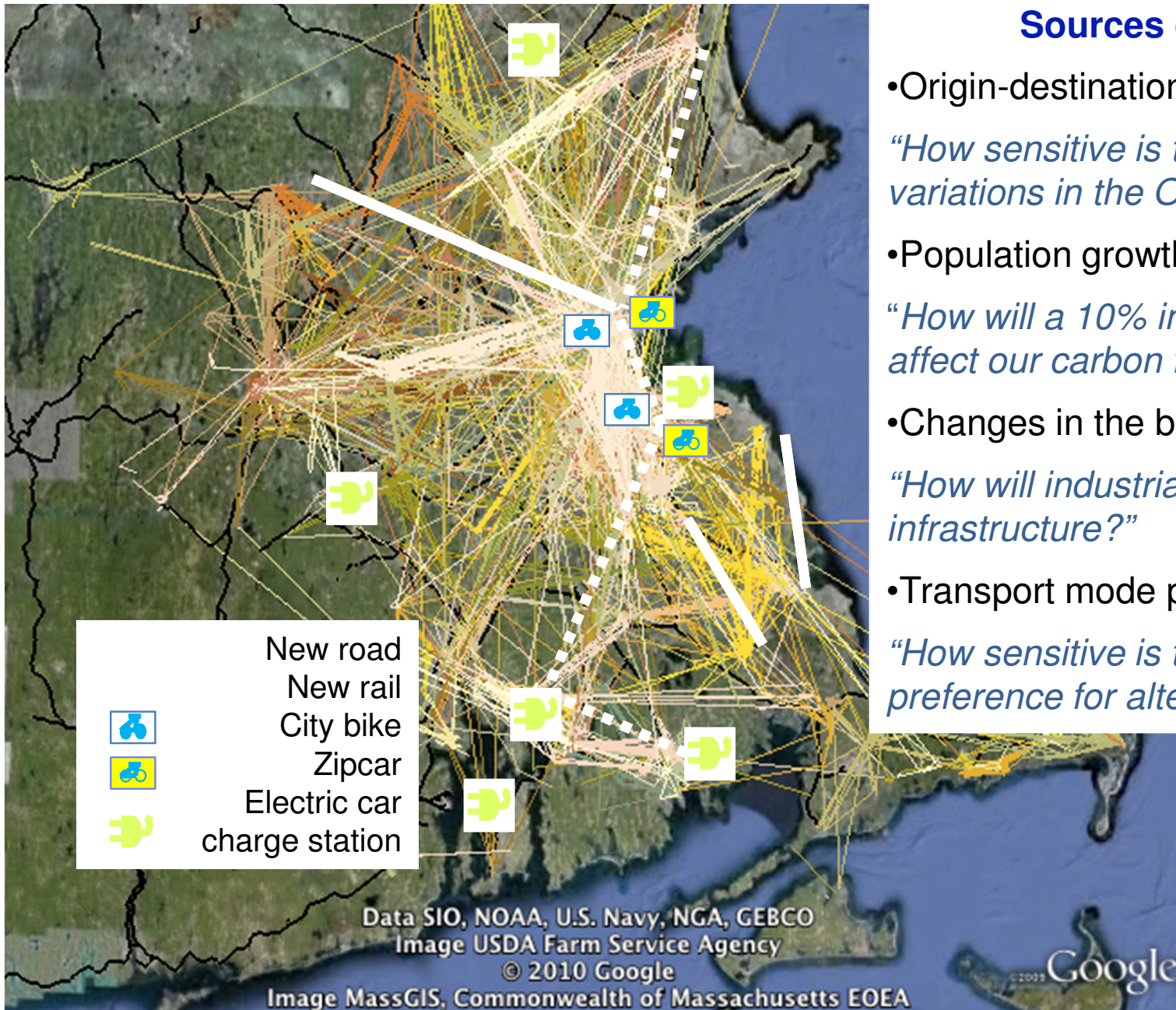


Types of decisions:

- The routes to create or expand
- The combination of transport modes
- The capacity of each route
- For alternative transport (e.g. “zipcar”, city bikes, electric vehicle stations), the location and capacity of each station



Example: Transportation infrastructure

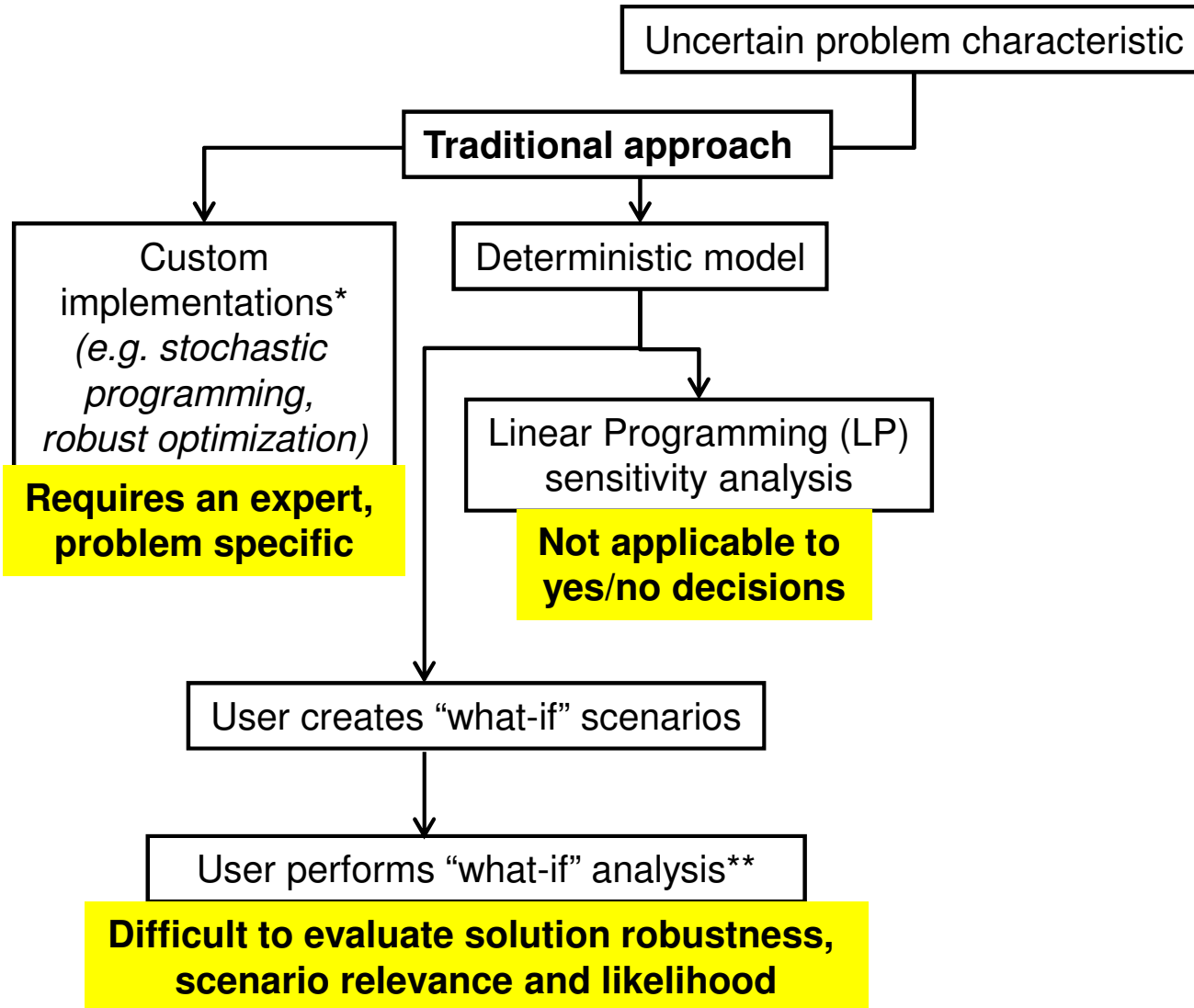


Sources of uncertainty:

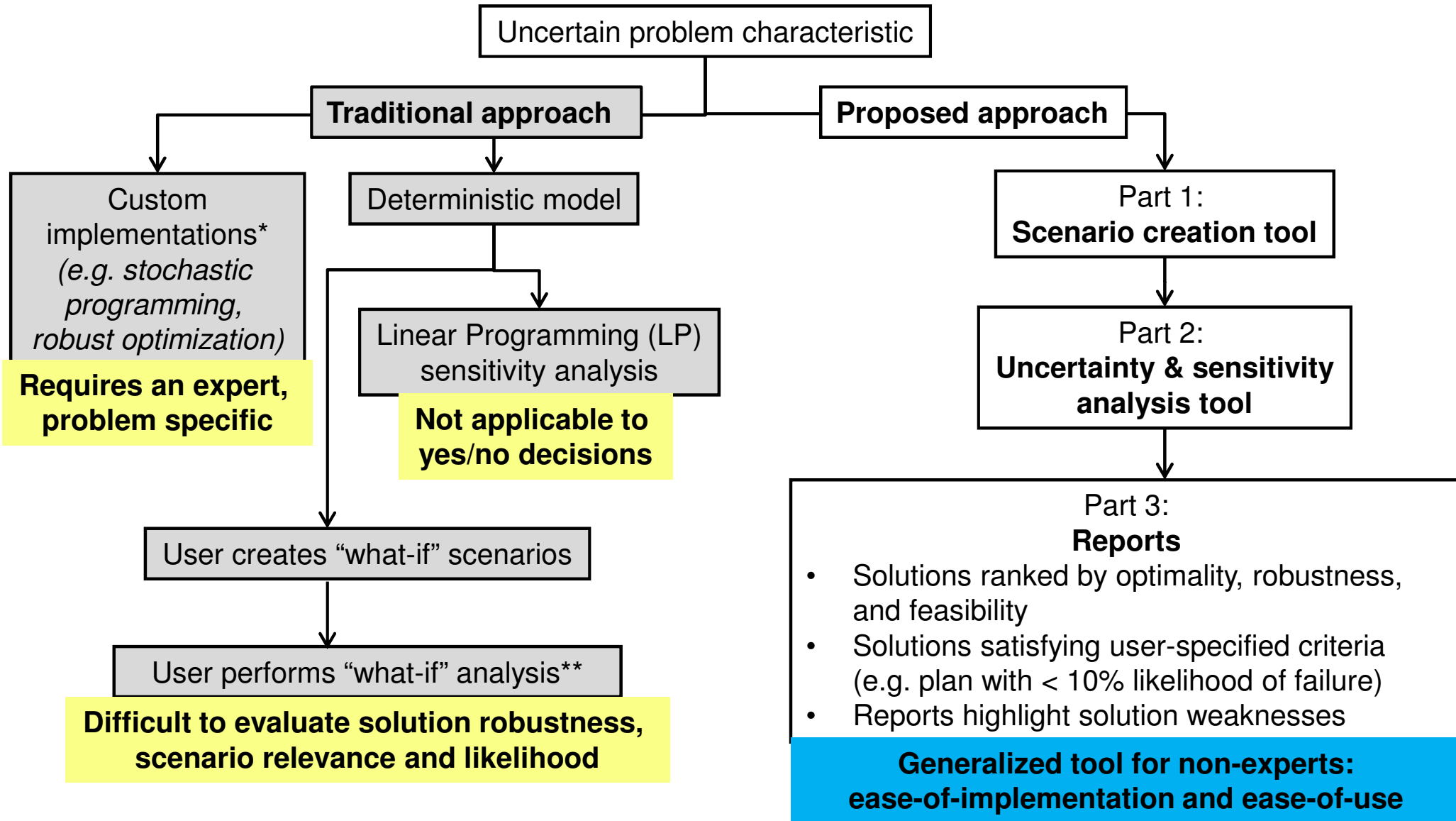
- Origin-destination matrices
“How sensitive is the investment plan to variations in the O-D matrices?”
- Population growth
“How will a 10% increase in population affect our carbon footprint?”
- Changes in the built environment
“How will industrial expansion affect the infrastructure?”
- Transport mode preference
“How sensitive is the plan to people’s preference for alternative transport?”



Traditional vs. Proposed Approach



Traditional vs. Proposed Approach



Challenges

- Capturing and generalizing user requirements
- Identifying and comparing best existing methods for
 - Scenario creation
 - Uncertainty and sensitivity analysis (e.g. stochastic programming, robust optimization, simulation, genetic algorithms)
- Researching new methods where current methods are lacking



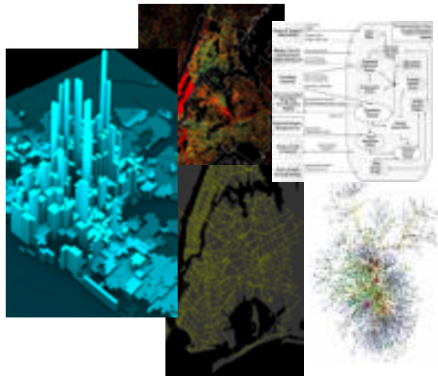
How can we help cities achieve their aspirations?



- ✓ **Sensor data assimilation**
From noisy data...
... to uncertain information



- ✓ **Modeling human demand**
Capturing uncertainty



- ✓ **Operations & Planning**
Factoring in uncertainty



Thanks
Francesco Calabrese
fcalabre@ie.ibm.com



Publications

- The Connected States of America. Can data help us think beyond state lines?, **Time Magazine**, 11 April 2011
- F Calabrese, D Dahlem, A Gerber, D Paul, X Chen, J Rowland, C Rath, C Ratti, The Connected States of America: Quantifying Social Radii of Influence, **International Conference on Social Computing**, 2011.
- F. Calabrese, G. Di Lorenzo, L. Liu, C. Ratti, "Estimating Origin-Destination flows using opportunistically collected mobile phone location data from one million users in Boston Metropolitan Area", **IEEE Pervasive Computing**, 2011.
- G. Di Lorenzo, F. Calabrese, "Identifying Human Spatio-Temporal Activity Patterns from Mobile-Phone Traces", **IEEE ITSC**, 2011
- F. Calabrese, Z. Smoreda, V. Blondel, C. Ratti, "The Interplay Between Telecommunications and Face-to-Face Interactions-An Initial Study Using Mobile Phone Data", **PLoS ONE**, 2011.
- D. Quercia, G. Di Lorenzo, F. Calabrese, C. Ratti, "Mobile Phones and Outdoor Advertising: Measurable Advertising", **IEEE Pervasive Computing**, 2011.
- F. Calabrese, M. Colonna, P. Lovisolo, D. Parata, C. Ratti, "Real-Time Urban Monitoring Using Cell Phones: a Case Study in Rome", **IEEE Transactions on Intelligent Transportation Systems**, 2011.
- L. Gasparini, E. Bouillet, F. Calabrese, O. Verscheure, Brendan O'Brien, Maggie O'Donnell, "System and Analytics for Continuously Assessing Transport Systems from Sparse and Noisy Observations: Case Study in Dublin", **IEEE ITSC**, 2011
- A. Baptista, E. Bouillet, F. Calabrese, O. Verscheure, "Towards Building an Uncertainty-aware Multi-Modal Journey Planner", **IEEE ITSC**, 2011
- T. Tchakian, O. Verscheure, "A Lagrangian State-Space Representation of a Macroscopic Traffic Flow Model", **IEEE ITSC**, 2011

